

Vigor-2500 (Bridged) Setup Instructions for Windows 2000 & Windows XP

Contents

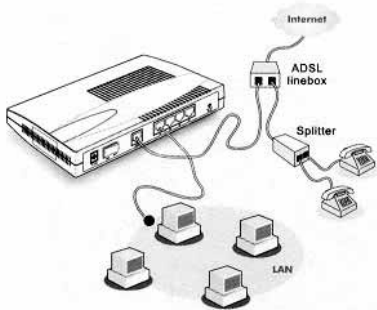
1. Equipment Checklist
2. Modem Configuration

1. Equipment Checklist

Please ensure that you have the following equipment:

- Vigor2500 Series ADSL Router
- Network Card for connection to the computer
- Ethernet Cable (blue) for connection to a computer or Hub.
- AC power supply adaptor.
- ADSL Line cable (RJ-11).
- Vigor2500 Product Documentation & Installation CD

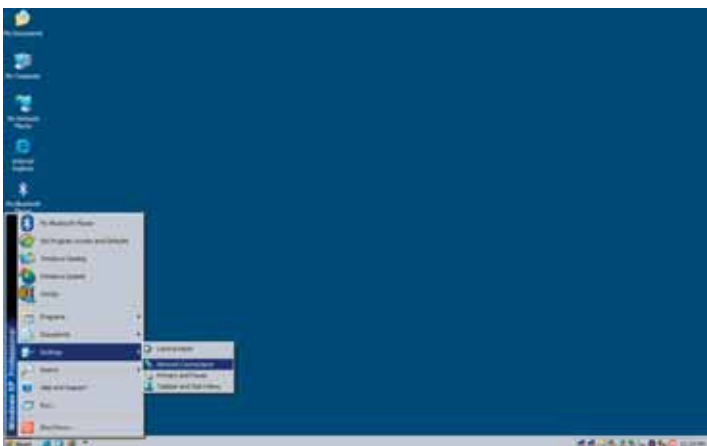
Please refer to the diagrams shown on the Quick Reference guide and below, in order to connect the Vigor-2500 Modem with your phone outlets and connect filter to your Telephone.



2. Modem Configuration

Please connect your modem to the computer for configuration of your ADSL Connection and turn power on.

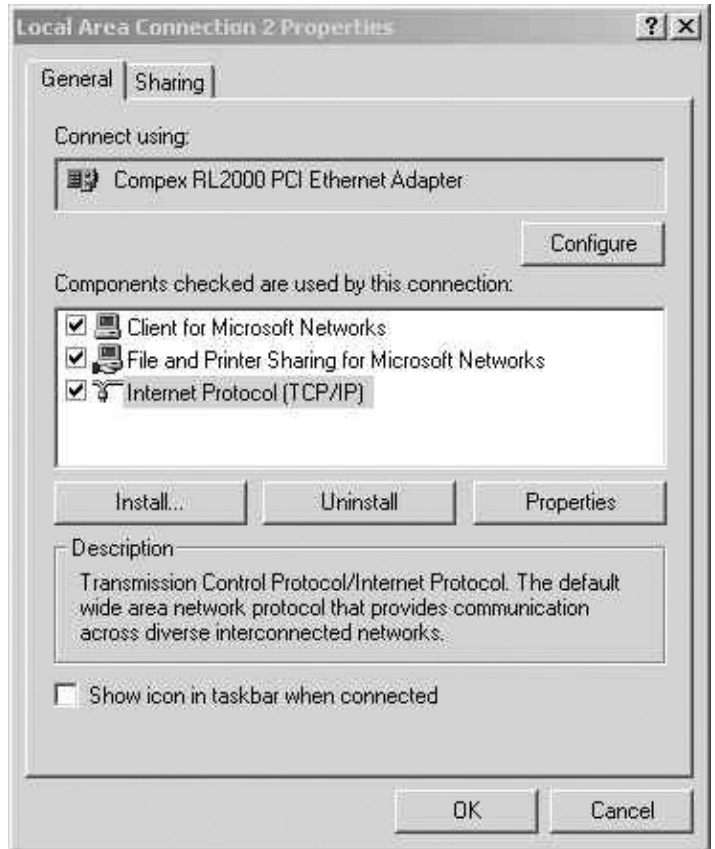
2.1 Click **Start -> Settings -> Network Connections** on your taskbar.



2.2 Right click on the icon **Local Area Connection** and then select **Properties**.



2.3 Select **Internet Protocol (TCP/IP)** and click **Properties**.

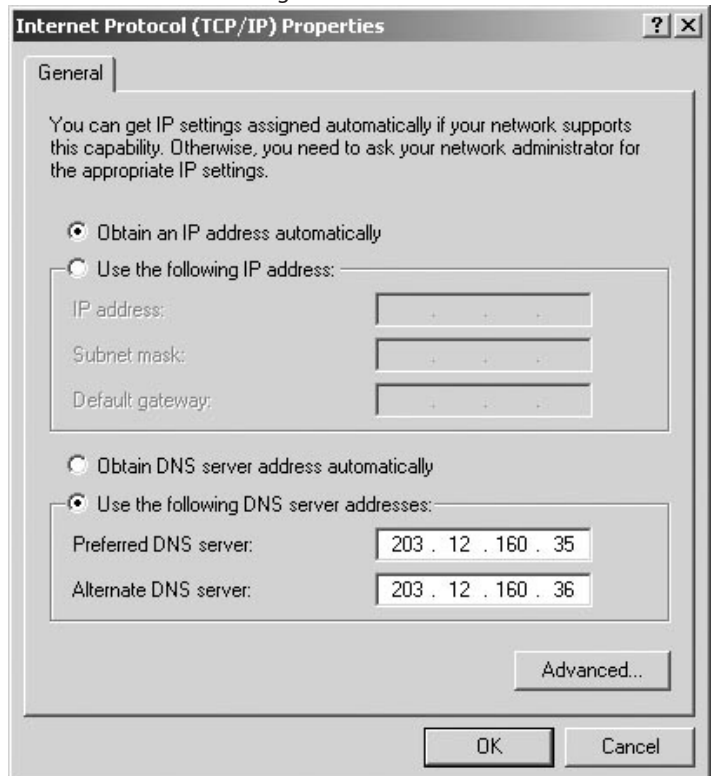


2.4 Select **Obtain an IP Address automatically**.

2.5 Select **Using the following DNS server addresses** and enter the following settings:

Primary DNS Server 203.12.160.35
Secondary DNS Server 203.12.160.36

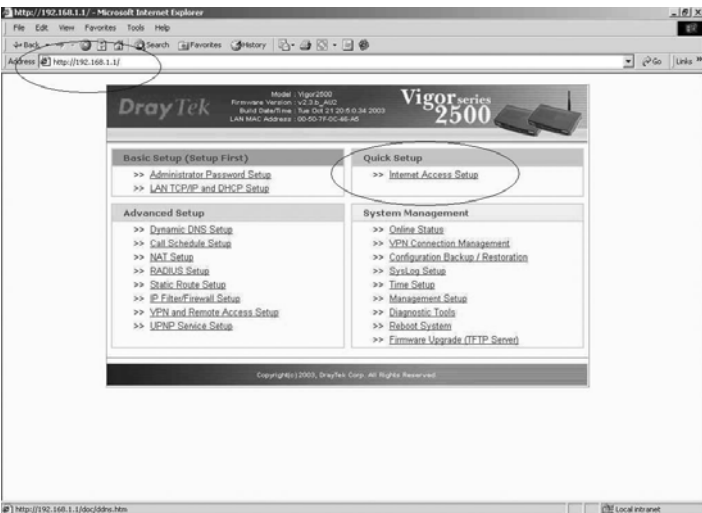
Click **OK** to save settings.



2.6 Enter **http://192.168.1.1** into a browser (eg, Internet Explorer, Netscape, etc). A Login prompt will then ask you for your Username and Password, but leave it empty and click **OK**.



2.7 Click **Internet Access Setup**.



2.8 Click **MPoA(RFC1483/2684)**.

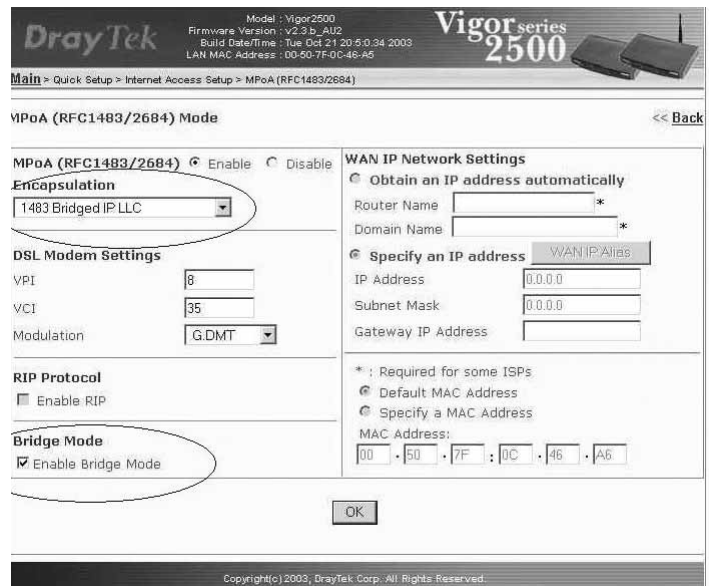


2.9 Enter the following **DSL Modem Settings**:

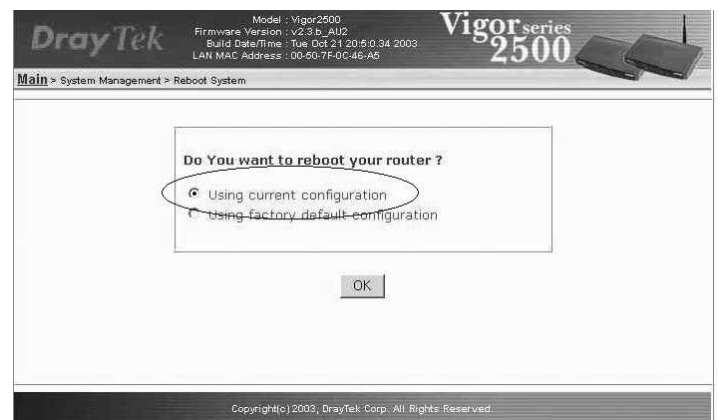
VPI: 8
VCI: 35
Modulation G-DMT

2.10 Select **Specify an IP Address**, and enter the following settings:

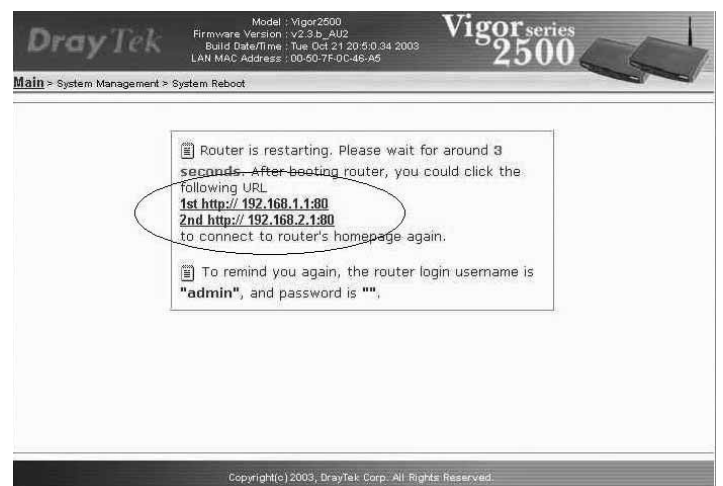
IP Address: Customer IP
Subnet Mask: 255.255.255.252
Gateway IP Address: Gateway IP



2.11 Select **Using Current Configuration** and click **OK**.



2.12 The Modem will automatically reboot and then your Modem Configuration will be complete.

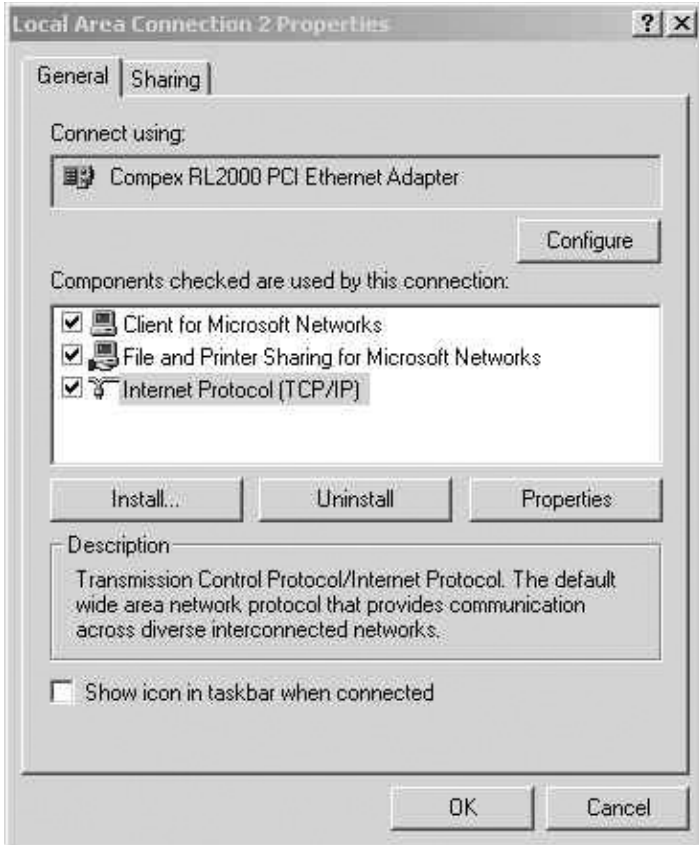


2.13 Click **Start -> Settings -> Control Panel -> Network Connections**.

2.14 Right Click **Local Area Connection**.

Double-click Internet Protocol (TCP/IP).

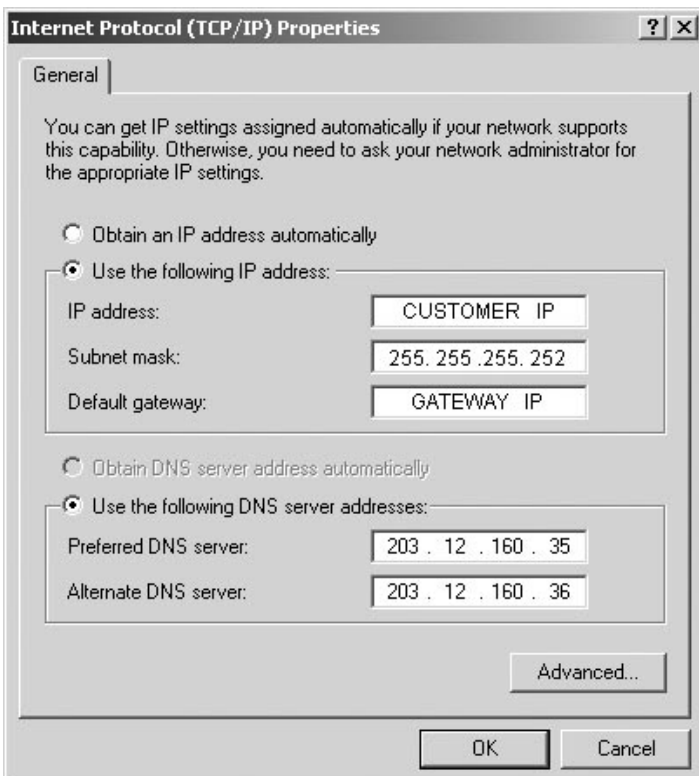
2.16 The IP setting will now be saved on your computer & you can begin browsing.



- 2.15** Select **Use the following IP Address** and enter the following settings:
- | | |
|------------------|--|
| IP Address: | CUSTOMER IP from the Info sheet |
| Subnet Mask: | 255.255.255.252 |
| Default Gateway: | GATEWAY IP from the Info sheet |

Select **Using the following DNS server addresses** and enter the following settings:

Primary DNS Server	203.12.160.35
Secondary DNS Server	203.12.160.36



Support Information

For any installation, configuration or billing enquiries, please call: **1300 360 855**
Or you can email your queries to helpdesk@tpg.com.au
Or visit www.tpg.com.au/helpdesk for further information.

The Help Desk service is available:
Monday to Friday 8:00am - Midnight
Weekends 9:00am - Midnight
Public holidays 10:00am - 4:00pm

For **modem-related problems** or suspected faulty modems please call:
D-Link Australia – 1800 177 100