

## Draytek Vigor 2500

Configuring in Layer2 PPPoE for Windows XP and 2000



### CONTENTS

1. Network Configuration
2. Restore Router To Factory Defaults
3. Re-configure In Layer2 PPPoE
4. Optional

**PLEASE NOTE:** Some screen shots may differ due to different versions of firmware used. Please have your router powered on and connected directly to your PC via Ethernet cable before you begin

### 1. NETWORK CONFIGURATION

PPPoE connection does not require you to have an IP address or DNS settings manually encoded on your network card. PPPoE connection uses authentication to establish the Internet connection and its after doing this that your router is assigned an IP and DNS settings from TPG.

To begin, your PC needs to receive a private IP address from the router. Most ADSL routers have DHCP enabled by default that will take care of this.

To ensure your Network Card is ready for this please follow the following steps:

- A. Click on **Start -> Settings -> Control Panel -> Network Connections**
- B. Find your Network Card then right click on this and select **Properties**



- C. Double click on **Internet Protocol TCP/IP**



- D. Ensure “**Obtain an IP address automatically**” is selected
- E. Ensure “**Obtain DNS server address automatically**” is selected
- F. Click on **OK**

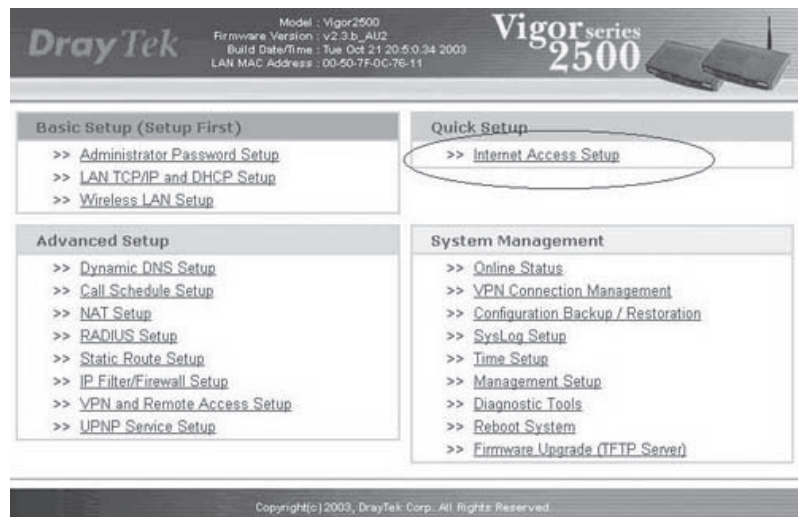
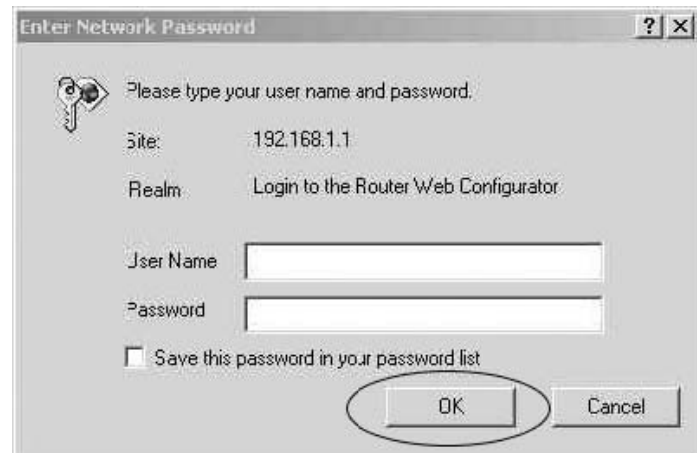
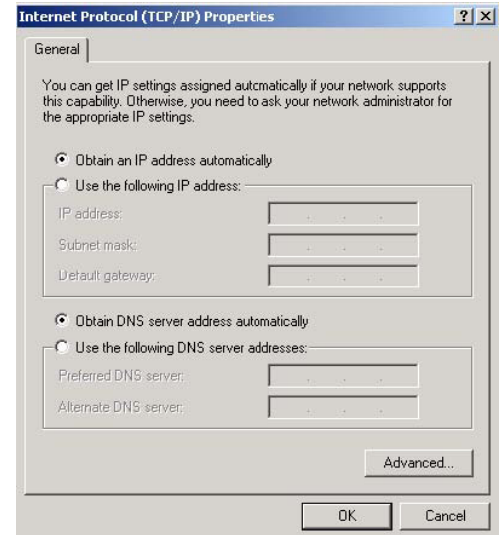
## 2. RESTORE ROUTER TO FACTORY DEFAULTS

**PLEASE NOTE:** By doing this step you will be deleting any additional customised settings (if applicable) in your router, for example port forwarding. You can change the configuration of your router to PPPoE without restoring the router to factory defaults in which case please skip this step and proceed from step 3 however if you experience Internet problems after completing the setup, we recommend you do perform step 2 then proceed from step 3

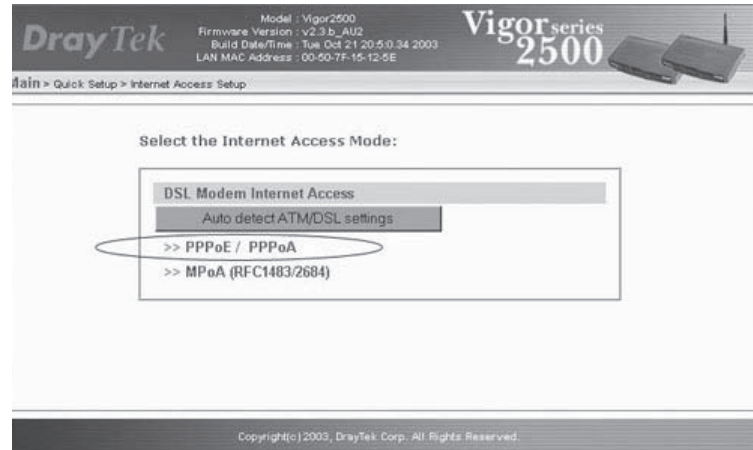
- A. Make sure your router is powered on and connected to your PC (Network card) via Straight through Ethernet cable
- B. Use a paper clip to depress the reset button at the back of your router for 10 seconds and release. At this point the reset is in progress. Please do not power off the unit
- C. When the indicator lights return steady, the reset is complete. Your router is now at factory defaults

## 3. RE-CONFIGURE IN LAYER 2 PPPOE

- A. Open your browser and in the address bar type <http://192.168.1.1> and press enter
- B. You will be prompted to login however just leave the username and password fields empty and click on OK. If your router is not at factory defaults and you have changed the login credential, please enter the current username and password for your router interface
- C. Click on the link **Internet Access Setup**



D. Click on **PPPoE/PPPoA**

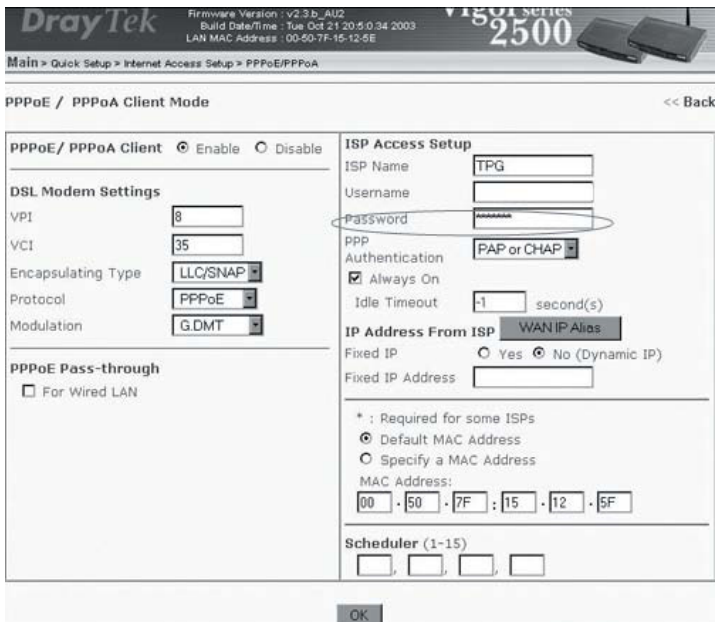


E. Enter the following **DSL Modem Settings**:

- PPPoE/PPPoA client: enabled
- VPI: 8
- VCI: 35
- Encapsulating Type: LLC /SNAP
- Protocol: PPPoE
- Modulation: G.dmt (for ADSL customers)  
Multimode (for ADSL2+ customers)

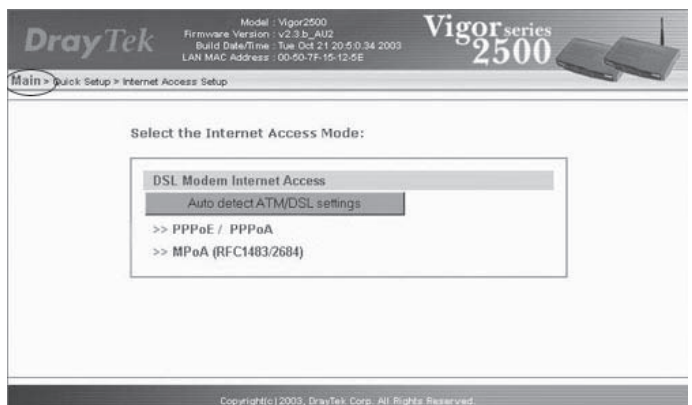
Enter the following ISP Access Setup

- ISP Name: TPG
- Username: - <TPGusername>@L2TP.tpg.com.au for Fixed IP plans **OR** - <TPGusername>@PPP.tpg.com.au for Dynamic IP plans (e.g. adsl1234@L2TP.tpg.com.au)
- Password: Your Password by default is the same as your <TPGusername> however if you have changed your password since registration time, please use your current TPG password
- PPP Authentication: PAP

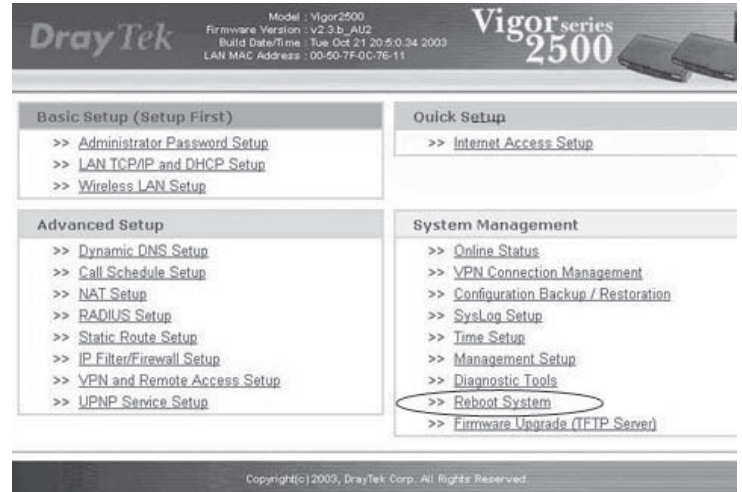


Click **OK** to save settings

F. Click on the menu **Main** in the top left corner



G. Under the heading **System Management**, click on the link **Reboot System**



H. The reboot process may take up to 60seconds after which your router will be reconfigured and ready to be used

I. To browse websites, please now launch your browser

## 4. OPTIONAL

### You router:

If you had other services setup on your router and you had restored your router to factory defaults before configuring in PPPoE, please now reconfigure these functions to your current router settings.

### Other Additional Services:

If you are reconfiguring your router from Layer 3 to Layer 2 PPPoE and you also had other services like web server, mail server, VPN etc that were dependent on your old Layer3 IP address, please ensure that appropriate reconfiguration is done to allow normal services to resume.

### PLEASE NOTE:

ADSL routers will by default be capable of automatic authentication. This means your router will use your credentials you have provided to make the Internet connection. Each time your router is powered on, it will initialize this automated authentication process after which your router will receive a public IP address (fixed or dynamic depending on your plan) and DNS settings from TPG