

Netcomm Wireless N150 NB14WN

Configuring in Layer2 PPPoE for Windows XP and 2000



IMPORTANT MESSAGE

Your modem has been pre-configured, you do not need to follow each step of the set-up guide but should retain this document in case you need to manually configure your equipment.

To configure your PC/Laptop with your wireless password please proceed to step 4d. To change your wireless password please proceed to step 4.

Contents

1. Physical Connection
2. Network Configuration
3. Configuring Internet Connection in Layer 2 PPPoE
4. Configuring Wireless
5. IPTV
6. Change of Password

1. PHYSICAL CONNECTION

Please refer to diagram CASE2 in the Quick Reference Guide.

PLEASE NOTE: Have your router powered on and connected directly to your PC via Ethernet Cable before you begin, as these instructions are based on wired Ethernet connection

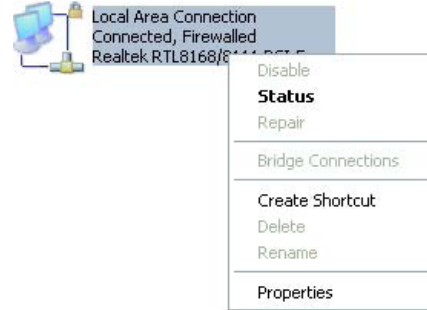
2. NETWORK CONFIGURATION

PPPoE connection does not require you to have an IP address or DNS settings manually encoded on your network card. PPPoE connection uses authentication to establish the Internet connection and its after doing this that your router is assigned an IP and DNS settings from TPG.

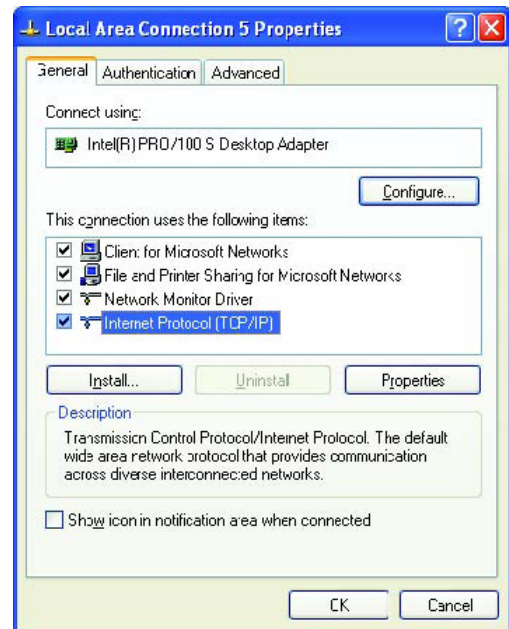
To begin, your PC needs to receive a private IP address from the router. Most ADSL routers have DHCP enabled by default that will take care of this.

To ensure your Network Card is ready for this please follow the following steps:

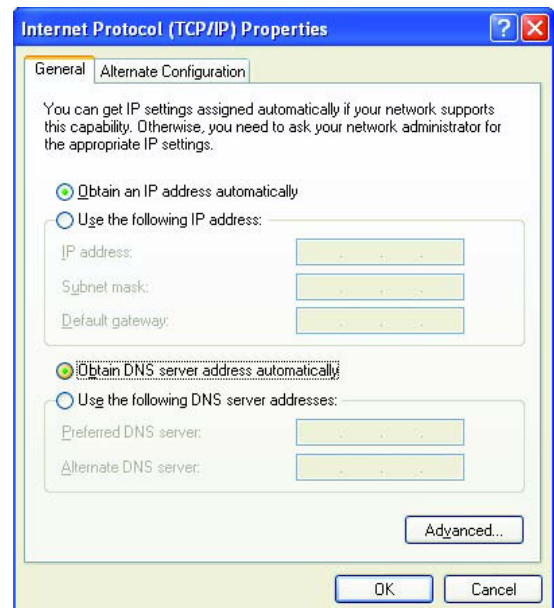
- A. Click on **Start -> Settings -> Control Panel -> Network Connections**
- B. Right click on Local Area Connection and select **Properties**



- C. Double click on **Internet Protocol TCP/IP**



- D. Ensure **“Obtain an IP address automatically”** is selected
- E. Ensure **“Obtain DNS server address automatically”** is selected
- F. Click on **OK**



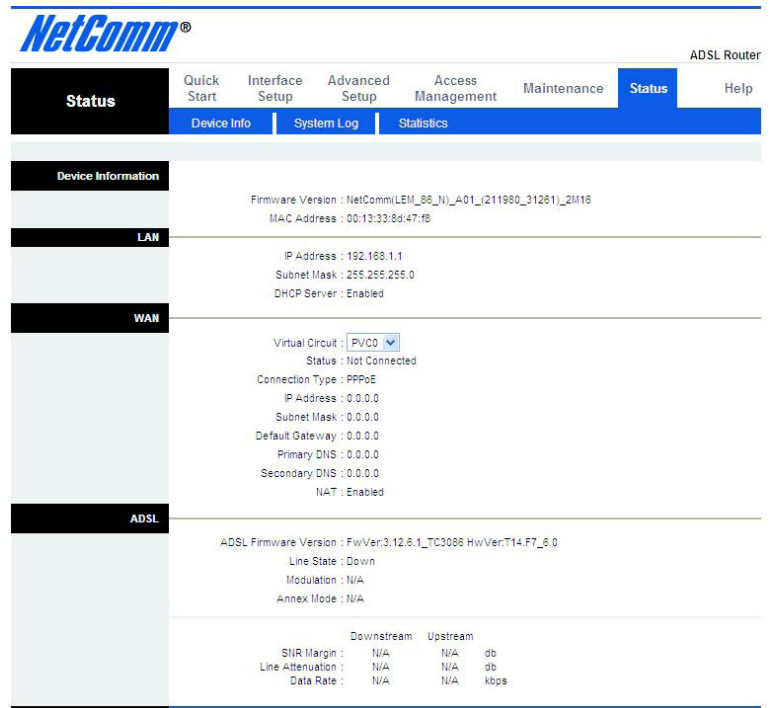
3. CONFIGURE LAYER 2 PPPOE

A. Open your browser and in the address bar type `http://192.168.1.1` and press enter

B. Enter **admin** for both the username and password and click on **OK**. If you have changed the login credentials, please enter the current username and password for your router interface.

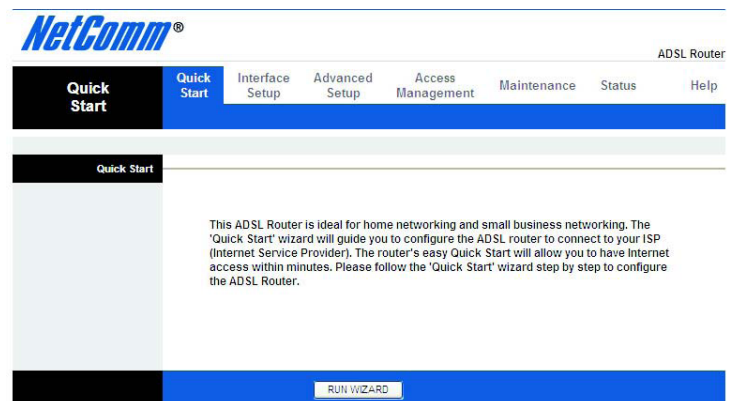


C. You should now see the site map screen.



D. You can use **Quick Start** to setup the router's ADSL connection with ease. Click **Quick Start** to get into the quick setup procedures.

E. Click **RUN WIZARD** to start up this procedure.



F. You may change the password by entering in a new password. Click **NEXT** to continue.



Quick Start - Password

You may change the **admin** account password by entering in a new password. Click **NEXT** to continue.

New Password :

Confirmed Password :

[BACK](#) [NEXT](#) [EXIT](#)

G. Select the appropriate time zone for your location. Click **NEXT** to continue.



Quick Start - Time Zone

Select the appropriate time zone for your location and click **NEXT** to continue.

(GMT+10:00) Brisbane, Canberra, Melbourne, Sydney, Hobart

[BACK](#) [NEXT](#) [EXIT](#)

H. In the ISP Connection Type screen, choose **PPPoE/PPPoA**. Click **NEXT** to continue.



Quick Start - ISP Connection Type

Select the Internet connection type to connect to your ISP. Click **NEXT** to continue.

- Dynamic IP Address Choose this option to obtain a IP address automatically from your ISP.
- Static IP Address Choose this option to set static IP information provided to you by your ISP.
- PPPoE/PPPoA Choose this option if your ISP uses PPPoE/PPPoA. (For most DSL users)
- Bridge Mode Choose this option if your ISP uses Bridge Mode.

[BACK](#) [NEXT](#) [EXIT](#)

I. Enter the following connection information into relevant field, Click **NEXT** to continue.

Username: can be found in the ADSL Configuration Details letter

Password: the password you nominated at the time of registration

VPI: 8

VCI: 35

Connection Type: PPPoE LLC



Quick Start - PPPoE/PPPoA

Enter the PPPoE/PPPoA information provided to you by your ISP. Click **NEXT** to continue.

Username:

Password:

VPI: (0-255)

VCI: (1-65535)

Connection Type: ▼

J. Please click **NEXT** to confirm your changes.



Quick Start Complete !!

The Setup Wizard has completed. Click on **BACK** to modify changes or mistakes. Click **NEXT** to save the current settings.

K. Please click **CLOSE** to exit the Quick Start Wizard.



Quick Start Completed !!

Saved Changes.

4. CONFIGURING WIRELESS

Things you need to know before you begin:

By default the NB14WN that you purchased from TPG is configured with the following wireless security settings:

SSID (name for the wireless connection):

Netcomm Wireless (router default)

Authentication Type: WPA-PSK/WPA2-PSK

Encryption: TKIP/AES

Pre Shared Key: initially configured to be the same as your TPG password. You can enter your own text as an option.

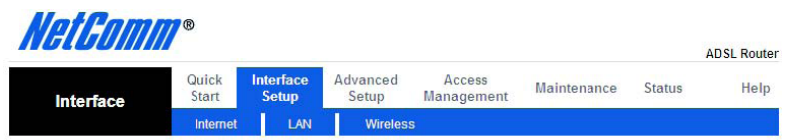
To use Wireless be sure that you already have set up your wireless adapter.

To begin your wireless setup please connect your computer to your router via Ethernet cable.

A. If you are still logged into your router, click on **“Wireless”** in the top menu. If you are not logged in anymore use your browser to go to 192.168.1.1 and login with **admin** as the username and **admin** as your password.



B. Go to **Interface** -> **Wireless** to setup the wireless parameters.



C. Ensure that the following is selected:

SSID: Netcomm Wireless (router default)

Note: SSID is the name of your wireless network. You can change the SSID. Only devices with the same SSID can interconnect.

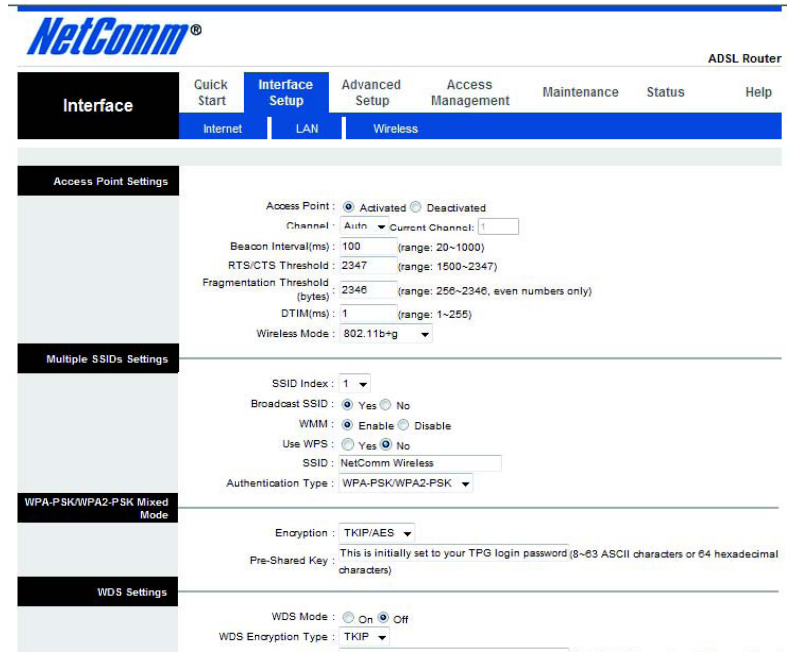
Authentication Type: WPA-PSK/WPA2-PSK

Encryption: TKIP/AES

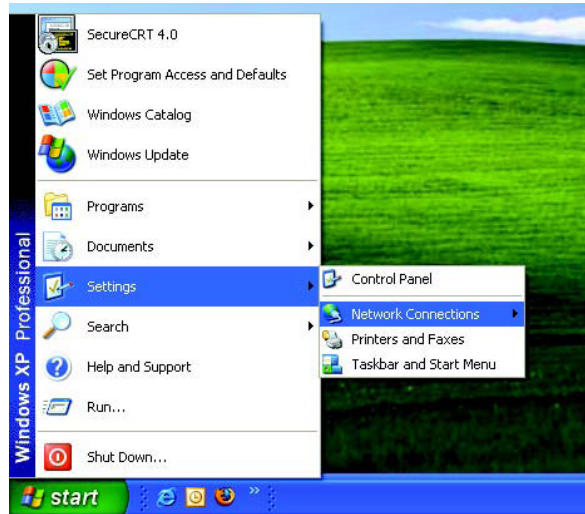
Pre Shared Key: initially configured to be the same as your TPG password.

Note: Pre Shared Key is the password of your wireless network. You can enter your own password as an option.

D. Click on **Save**

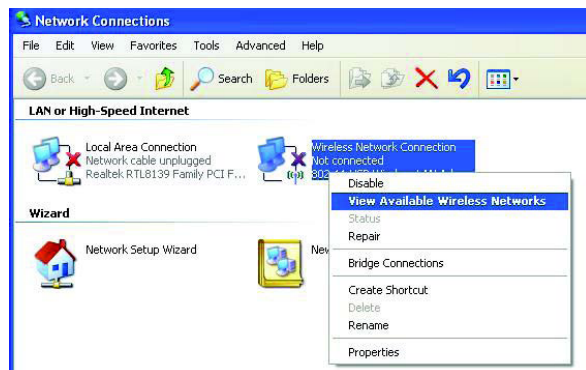


E. To connect using wireless, go to **Start -> Control Panel**



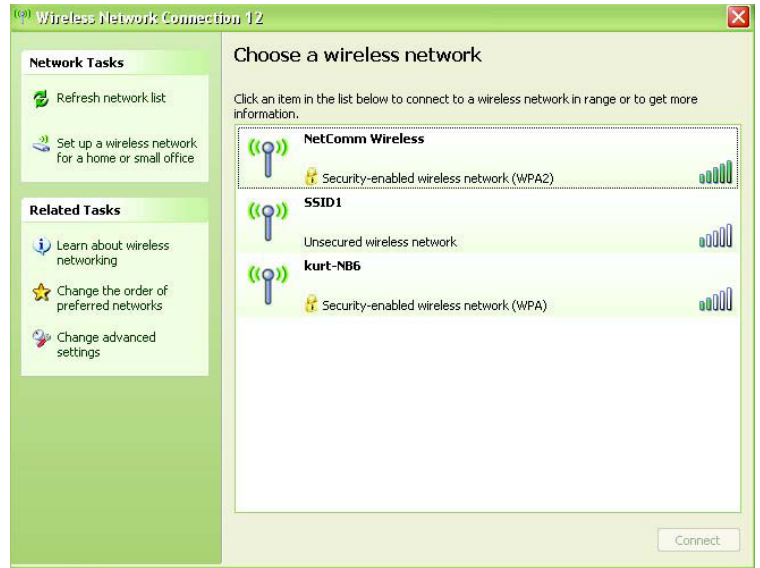
F. Double click on 'Network Connections'

G. Right click on your wireless adapter and go to 'View Available Wireless Networks'



H. Find the SSID (network name) of your router and click on **Connect**. By default, the network name should be **Netcomm Wireless**.

However if you have changed the network name in step 4c, please select your personal wireless network name.



I. You will now be prompted to enter your **WAP Key / wireless password**. This is the same as your TPG password if you did not change it on the router.

J. Click on **Connect**.

K. You should now see your status as '**Connected**'.

5. IPTV

Your Netcomm NB14NW modem is pre configured with the TPG IPTV settings. Should you require further assistance please contact the TPG helpdesk on 13 14 23 (option 2)

6. CHANGE OF PASSWORD

For security purposes we highly recommend that you change your password if you are using your default or if you believe your password security has been compromised.

To change your password, first please visit

https://cyberstore.tpg.com.au/your_account/?function=changepassword. Your new password will take approximately 10-15 minutes to take effect, after which you must reconfigure your new password in your router.

To update the password in your router, please follow Step 3 of this guide (Configure Layer 2 PPPoE).

PLEASE NOTE:

ADSL routers will by default be capable of automatic authentication. This means your router will use your credentials you have provided to make the Internet connection. Each time your router is powered on, it will initialize this automated authentication process after which your router will receive a public IP address (fixed or dynamic depending on your plan) and DNS settings from TPG.