



Netcomm NB6+4 Configuring in Layer2 PPPoE for Windows XP and 2000

Contents

1. Network Configuration
2. Restore Router To Factory Defaults
3. Re-configure In Layer2 PPPoE

Please note: Some screen shots may differ due to different versions of firmware used. Please have your router powered on and connected directly to your PC via Ethernet cable before you begin

1. Network Configuration

PPPoE connection does not require you to have an IP address or DNS settings manually encoded on your network card. PPPoE connection uses authentication to establish the Internet connection and its after doing this that your router is assigned an IP and DNS settings from TPG.

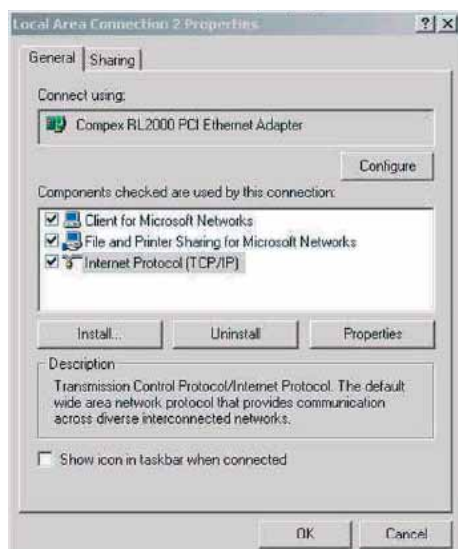
To begin, your PC needs to receive a private IP address from the router. Most ADSL routers have DHCP enabled by default that will take care of this.

To ensure your Network Card is ready for this, please follow the following steps:

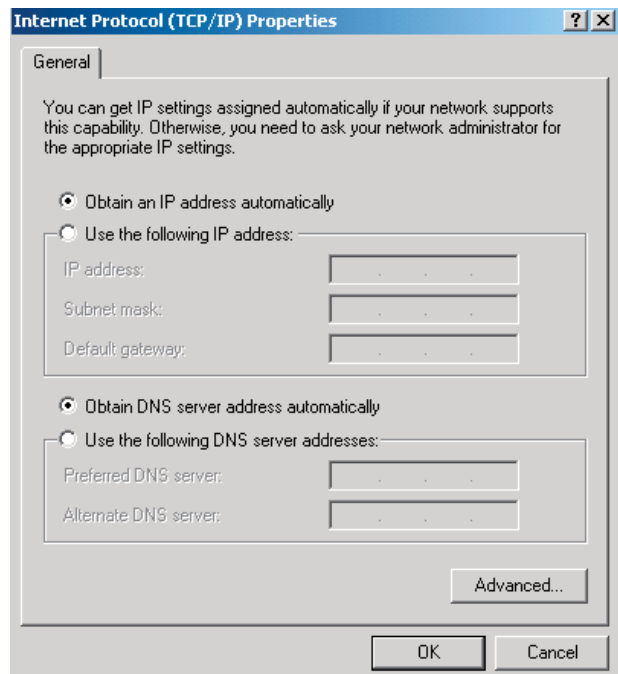
- a. Click on **Start -> Settings ->Control Panel -> Network Connections**
- b. Find your Network Card then right click on this and select **Properties**



- c. Double click on **Internet Protocol TCP/IP**



- d. Ensure **"Obtain an IP address automatically"** is selected
- e. Ensure **"Obtain DNS server address automatically"** is selected
- f. Click on **OK**



2. Restore Router To Factory Defaults

Please Note: By doing this step you will be deleting any additional customised settings (if applicable) in your router. You can change the configuration of your router to PPPoE without restoring the router to factory defaults in which case please skip this step and proceed from step 3 however if you experience Internet problems after completing the setup, we recommend you do perform step 2 then proceed from step 3.
If the router is already at factory defaults, please skip this step and go to step 3

- a. Make sure your router is powered on and connected to your PC (Network card) via Straight through Ethernet cable
- b. Use a paper clip to depress the reset button at the back of your router for 10 seconds and release. At this point the reset is in progress. Please do not power off the unit
- c. When the indicator lights return steady, the reset is complete. Your router is now at factory defaults

3. Re-configure In Layer 2 PPPoE

- a. Open your browser and in the address bar type **http://192.168.1.1** and press enter
- b. Enter **admin** for both the username and password and click on **OK**. If your router is not at factory defaults and you have changed the login credential, please enter the current username and password for your router interface



- c. In the **Quick Start Menu**, click on **Quick Startup**
- d. Untick **Auto Scan Internet Connection (PVC)**
Ensure **VPI = 8; VCI = 35**
Click **Next**

NetComm Quick Start | Status | Advanced | Management

Language: English

Connect to Internet
Quick Setup

Quick Setup
This Quick Setup will guide you through the steps necessary to configure your DSL router.
Select the check box below to scan the Internet connection automatically. It is recommended that there is no any PVC configured in your DSL router before performing auto-scanning connection.

☒ Auto Scan Internet Connection (PVC)

Configure Internet Connection -- ATM PVC
Please enter VPI and VCI numbers for the Internet connection which is provided by your ISP.

VPI: 8 (0-255)
VCI: 33 (32-65535)

All original settings will be replaced by new settings after you finish these steps.

Next >

e. Ensure Protocol **PPP over Ethernet** is selected
Encapsulation Type is **LLC/SNAP**
Click **Next**

NetComm Quick Start | Status | Advanced | Management

Language: English

Connect to Internet
Quick Setup

Configure Internet Connection - Connection Type
Select the protocol and encapsulation type with the ATM PVC that your ISP has instructed you to use.

Protocol:

- ☐ PPP over ATM (PPPoA)
- ☒ PPP over Ethernet (PPPoE)
- ☐ IP over ATM (IPoA)
- ☐ Bridging

Encapsulation Type: LLC/SNAP

Next >

f. Ensure you have the following settings then click **Next**

NetComm Quick Start | Status | Advanced | Management

Language: English

Connect to Internet
Quick Setup

Configure Internet Connection - WAN IP Settings
Enter information provided to you by your ISP to configure the WAN IP settings.

☒ Obtain an IP address automatically
☐ Use the following IP address:
WAN IP Address: 0.0.0.0

☒ Enable NAT

MTU: 1492 (default: 1492)

Next >

g. Enter the following then click on **Next**

For ADSL1 Customers:

- PPP User Name:
- <TPGusername>@L2TP.tpg.com.au for Fixed IP plans
OR
- <TPGusername>@PPP.tpg.com.au for Dynamic IP plans
(e.g. adsl1234@L2TP.tpg.com.au)

- PPP Password: Your Password by default is the same as your <TPGusername> however if you have changed your password since registration time, please use your current TPG password

For ADSL2+ Customers:

- PPP User Name: <TPGusername>
- PPP Password: Your Password by default is the same as your <TPGusername> however if you have changed your password since registration time, please use your current TPG password

NetComm Quick Start | Status | Advanced | Management

Language: English

Connect to Internet
Quick Setup

Configure Internet Connection - PPP User Name and Password
In order to establish the Internet connection, please enter PPP user name and password that your ISP has provided.

PPP User Name:
PPP Password:

Session established by: ☒ Always On
☐ Dial on Demand
Disconnect if no activity for 20 minutes
☐ Manually Connect
Disconnect if no activity for 20 minutes

Next >

h. Ensure you have the following settings then click **Next**

NetComm Quick Start | Status | Advanced | Management

Language: English

Connect to Internet
Quick Setup

Configure LAN side Settings
Enter the DSL router IP address and subnet mask for LAN interface and then enable DHCP server on LAN interface to provide IP address settings for your computers.

Primary IP Address: 192.168.1.1
Subnet Mask: 255.255.255.0

☐ Configure secondary IP address and subnet mask

MTU: 1500 (Default: 1500)

☒ DHCP Server On
Start IP: 192.168.1.2
End IP: 192.168.1.254
Lease Time: 1 days 0 hours 0 minutes

☐ DHCP Server Off

Next >

i. Click on **Finish**

NetComm Quick Start | Status | Advanced | Management

Language: English

Connect to Internet
Quick Setup

This Internet Connection - Summary
Make sure that the settings below match the settings provided by your ISP.

Internet (WAN) Configuration:	
VPI / VCI	8 / 33
Connection Type	PPPoE LLC/SNAP, Always On, QoS On
NAT	Enabled
WAN IP Address	Automatically Assigned
Default Gateway	Automatically Assigned
DNS Server	Automatically Assigned

LAN Configuration:	
Primary LAN IP	192.168.1.1 / 255.255.255.0
Secondary LAN IP	0.0.0.0 / 255.255.255.255
DHCP Server	On 192.168.1.2 - 192.168.1.254
DHCP Lease Time	1 days 0 hours 0 minutes

Click "Finish" to accept these settings, and reboot the system.
Click "Next" to make any modifications.

Finish

j. Please wait while your router reboots

NetComm Quick Start | Status | Advanced | Management

Language: English

Connect to Internet
Quick Setup

Reboot DSL Router
The DSL router has been configured and is rebooting.
Close the DSL router configuration window and wait for 2 minutes before reopening your web browser. If necessary, reconfigure your PC's IP address to match your new configuration.

Please Note: ADSL routers will by default be capable of automatic authentication. This means your router will use your credentials you have provided to make the Internet connection. Each time your router is powered on, it will initialize this automated authentication process after which your router will receive a public IP address (fixed or dynamic depending on your plan) and DNS settings from TPG

Support Information

For further assistance, please call TPG Technical Support on 1300 360 855

Technical Support Opening Hours

Monday to Friday 8am - midnight
Saturday and Sunday 9am - 9pm
Public Holidays 9am - 6pm

