

ADSL+ Wireless N300 Modem Router NB604n

c. Double click on **Internet Protocol TCP/IP**



Important Message

Your modem has been pre-configured, you do not need to follow each step of the set-up guide but should retain this document in case you need to manually configure your equipment.

To configure your PC/Laptop with your wireless password please proceed to step 4d. To change your wireless password please proceed to step 4.

Contents

1. Physical Connection
2. Network Configuration
3. Configuring Router
4. Configuring Wireless
5. IPTV
6. Change of Password

1. Physical Connection

Please refer to the Quick Reference Guide.

Please note: Have your router powered on and connected directly to your PC via Ethernet Cable before you begin as these instructions are based on wired Ethernet connection

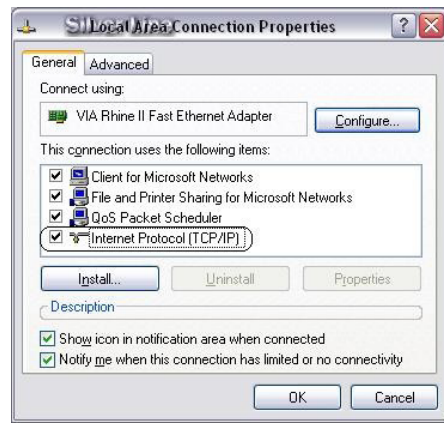
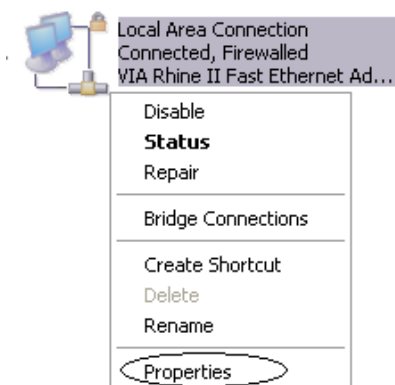
2. Network Configuration

PPPoE connection does not require you to have an IP address or DNS settings manually encoded on your network card. PPPoE connection uses authentication to establish the Internet connection and its after doing this that your router is assigned an IP and DNS settings from TPG.

To begin, your PC needs to receive a private IP address from the router. Most ADSL routers have DHCP enabled by default that will take care of this.

To ensure your Network Card is ready for this, please follow the following steps:

- Click **Start > Settings > Control Panel > Network Connections**
- Right click on Local Area Connection and select **Properties**



d. Ensure **"Obtain an IP address automatically"** is selected

e. Ensure **"Obtain DNS server address automatically"** is selected

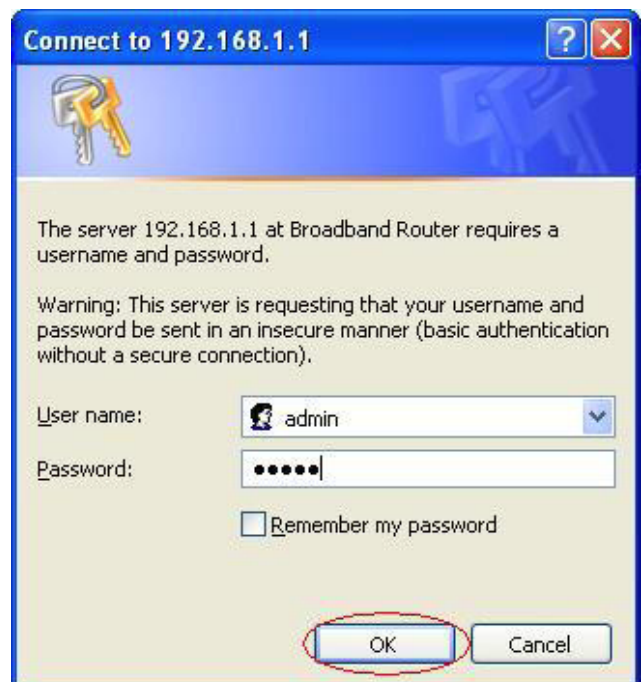
f. Click **OK**



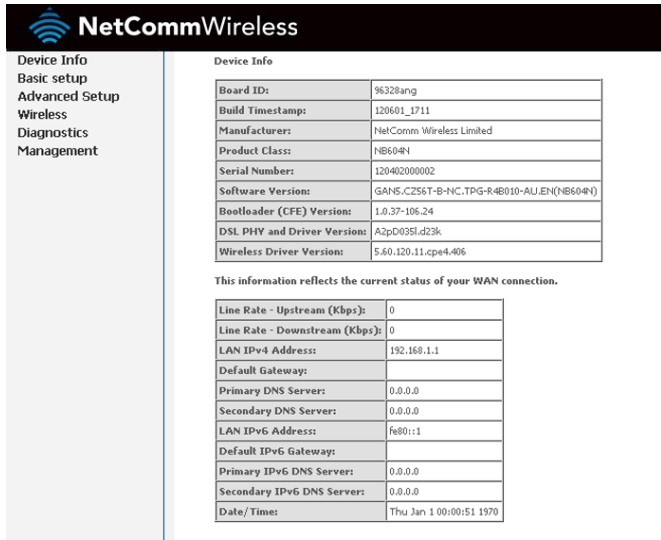
3. Configuring Router

a. Open your browser and in the address bar type **http://192.168.1.1** and press Enter

b. Enter **admin** for both the username and password and click **OK**. If you have changed the login credentials, please enter the current username and password for your router interface.

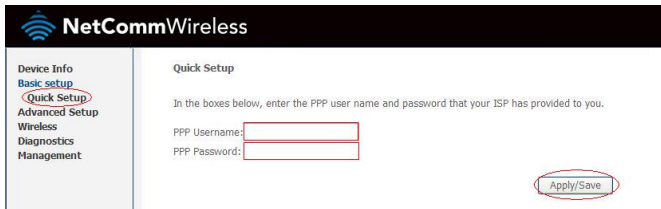


c. You will see this screen map.

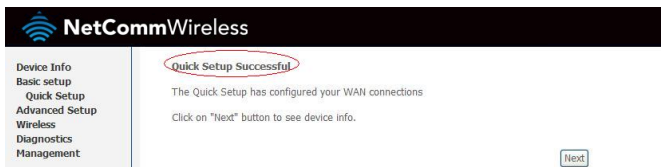


d. You can use **Quick Setup** to setup the router's ADSL connection with ease. Click **Quick Setup** to start this process.

e. Enter your own TPG **username** and **password**. Click **Apply/Save** to save your authentication details.



f. **Quick Setup complete!** The setup wizard is completed.



4. Configuring Wireless

Things you need to know before you begin:

By default the NB604N that you purchased from TPG is configured with the following wireless security settings:

SSID (name for the wireless connection):

Netcomm Wireless (router default)

Authentication Type: WPA-PSK/WPA2-PSK

Encryption: TKIP/AES

Pre Shared Key: initially configured to be the same as your TPG password. You can enter your own text as an option.

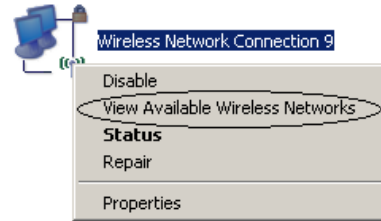
To use Wireless, ensure that you already have set up your wireless adapter.

a. To connect using wireless, go to **Start > Control Panel**

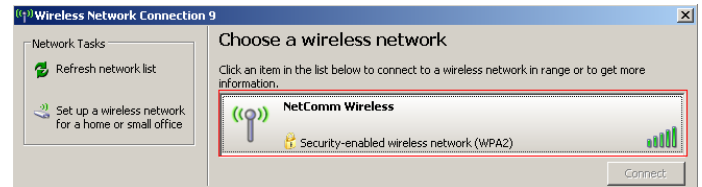


b. Double click on **'Network Connections'**

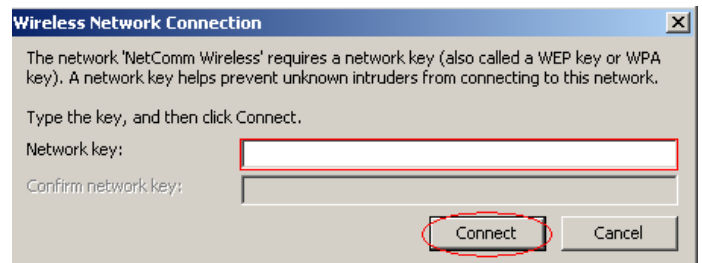
c. Right click on **Wireless Network Connection** and click **'View Available Wireless Networks'**



d. Find the SSID (network name) of your router and click **Connect**. By default, the network name should be **Netcomm Wireless**.

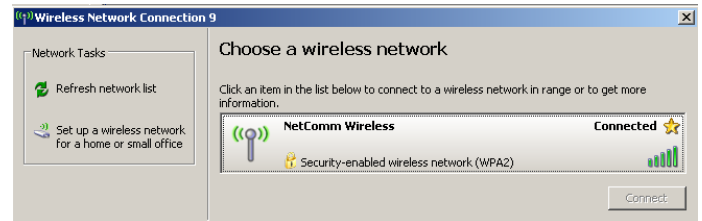


e. You will now be prompted to enter your **WPA Key / wireless password**. This is the same as your TPG password if you did not change it on the router.



f. Click **Connect**.

g. You should now see your status as **'Connected'**.



5. IPTV

Your Netcomm NB604N modem is pre-configured with TPG IPTV settings.

Should you require further assistance please contact the **TPG Helpdesk** on **13 14 23** (option 2).

6. Change of Password

For security purposes we highly recommend that you change your password if you are using your default or if you believe your password security has been compromised.

For password information, please visit: www.tpg.com.au/support

Please note: Each time your router is powered on, it will initialise this automated authentication process after which your router will receive a public IP address (fixed or dynamic depending on your plan) and DNS settings from TPG.

