

VR1600v (NBN FTTC, NBN HFC & NBN Fixed Wireless)

Windows 7



IMPORTANT MESSAGE

Your modem has already been pre-configured, you do not need to follow each step of the set-up guide but should retain this document in case you need to manually configure your equipment.

To configure your PC/Laptop with your wireless password including changing your wireless password, please proceed to step 4.

Contents

1. Physical Connection
2. Network Configuration
3. Configuring Internet
4. Configuring Wireless
5. Change of Password

1. PHYSICAL CONNECTION

Have your modem powered on and connected directly to your PC via Ethernet Cable before you begin, as these instructions are based on wired Ethernet connection

For further information, please see wiring diagram and instructions for your NBN connection type below.

- [NBN Fibre To The Curb \(FTTC\)](#)
- [NBN Fixed Wireless](#)
- [NBN Cable Broadband \(HFC\)](#)

2. NETWORK CONFIGURATION

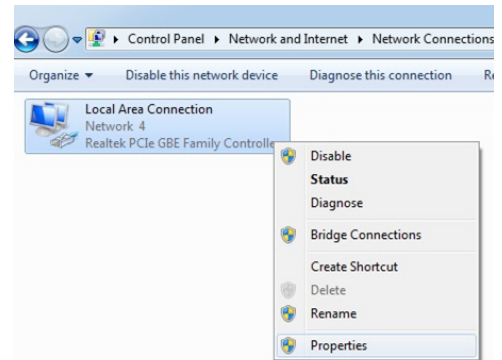
PPPoE connection does not require you to have an IP address or DNS settings manually encoded on your network card. PPPoE connection uses authentication to establish the Internet connection and once connected your modem will be assigned an IP and DNS settings from TPG.

To begin, your PC needs to receive a private IP address from the modem. Most modems have DHCP enabled by default that will take care of this.

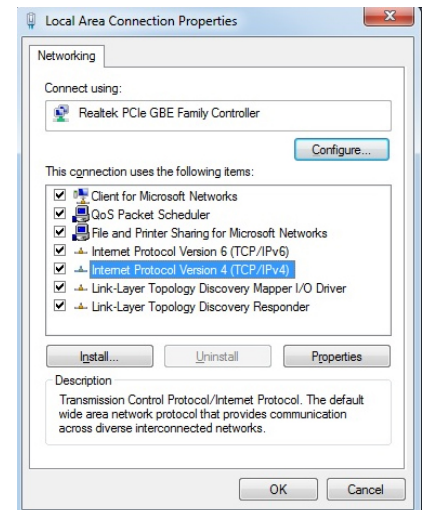
To ensure your Network Card is ready for this, please follow the following steps:

A. Click **Start -> Control Panel -> Network and Internet -> Network and Sharing Center -> Change adapter settings**

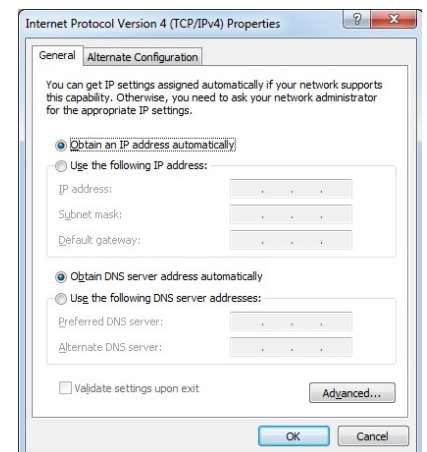
B. Right click on Local Area Connection and select **Properties**



C. Click on **Internet Protocol Version 4 (TCP/IPv4)**, and then click **Properties**

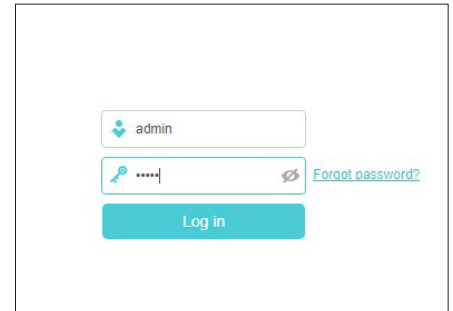


D. Ensure “**Obtain an IP address automatically**” is selected
E. Ensure “**Obtain DNS server address automatically**” is selected
F. Click **OK**



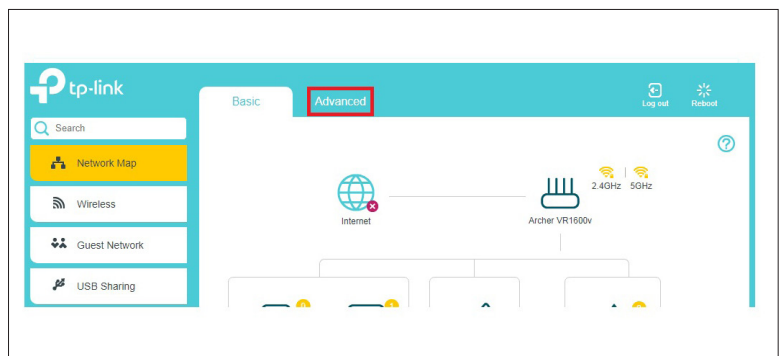
3. CONFIGURING MODEM

- A. Open your browser and in the address bar type **http://192.168.1.1** and press Enter
- B. Enter **admin** for both the username and password and click **Login**.
If you have changed the login credentials, please enter the current username and password for your modem interface.

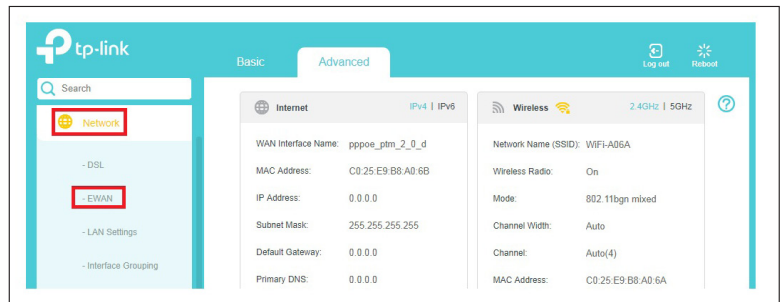


The login form consists of two input fields. The first field is for the username, with 'admin' entered. The second field is for the password, with 'admin' entered and masked with dots. To the right of the password field is a link that says 'Forgot password?'. Below the password field is a blue 'Log in' button.

- C. You will see the home screen shown on the right.
Click the **Advanced** tab.



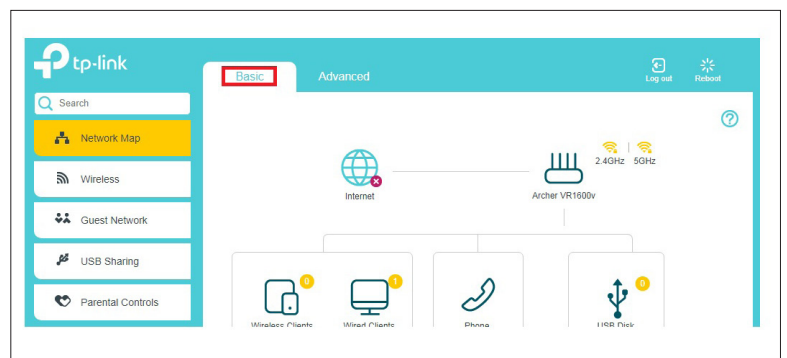
- D. On the menu on the left side of the page, click **Network** to expand the menu and then click **EWAN**.



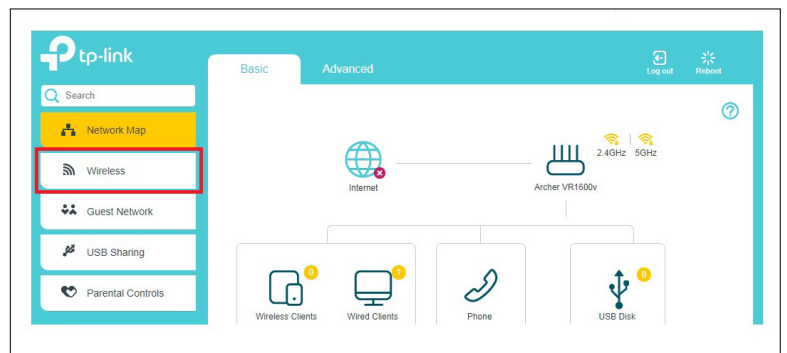
E. Enter your TPG **Username** and **Password**.
Click **Save**

The screenshot shows the 'Internet Setup' section of the TP-Link Archer VR1600v web interface. The 'Advanced' tab is selected. The 'Internet Connection Type' is set to 'PPPoE'. The 'Username' and 'Password' fields are highlighted with a red box. The 'VLAN ID' is set to '2'. The 'Connection Mode' is set to 'Auto' and the 'Authentication Type' is set to 'Auto'.

F. Click the **Basic** tab.



G. On the menu on the left side of the page, click **Wireless**.



H. You can change your Wi-Fi details or keep the default settings. The default Wi-Fi SSID (network name) is WiFi-xxxx (xxxx is a random 4 digit alphanumeric code printed on the sticker underneath your modem). By default, the Wi-Fi password is printed on a sticker underneath your modem (**Wireless Password/Key**). Click Save.

Setup complete!

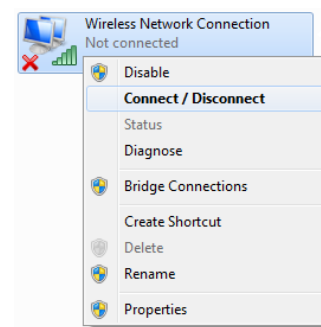
The screenshot shows the 'Wireless Settings' section of the TP-Link Archer VR1600v web interface. The 'Basic' tab is selected. The '2.4GHz Wireless Network' and '5GHz Wireless Network' sections are visible. The 'Save' button is highlighted.

4. CONFIGURING WIRELESS

To use Wireless, ensure that you already have set up your wireless adapter.

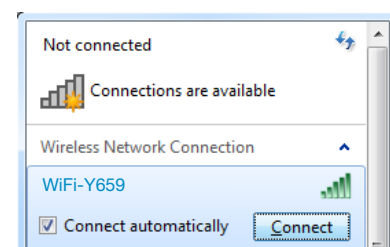
A. Click **Start -> Control Panel -> Network and Internet -> Network and Sharing Center -> Change adapter settings**

B. Right click on **Wireless Network Connection** and click '**Connect/Disconnect**'

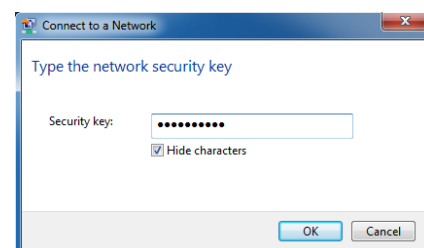


C. Find the SSID (network name) of your modem and click **Connect**. By the default, the network name should be **WiFi-xxxx** (xxxx is a random 4 digit alpha numeric code).

Note: You may notice there are two wireless networks present. You may connect to either of these, but if you are experiencing slow speeds on your Wi-Fi connection we recommend connecting your device to the 5G wireless network.



D. You will now be prompted to enter your **WPA Key / wireless** password. By default, the WiFi password is printed on a sticker underneath your modem (**WLAN Key**). if you did not change it on the modem.



E. Click **OK**.

F. You should now see your status as '**Connected**'.



5. CHANGE OF PASSWORD

For security purposes we highly recommend that you change your password if you are using your default or if you believe your password security has been compromised. For password information, please visit www.tpg.com.au/support.

PLEASE NOTE:

Each time your modem is powered on, it will initialize this automated authentication process after which your modem will receive a public dynamic IP address (fixed or dynamic depending on your plan) and DNS settings from TPG.