

Netcomm NF7



IMPORTANT MESSAGE

Your router has been pre-configured, you do not need to follow each step of the set-up guide but should retain this document in case you need to manually configure your equipment.

To configure your PC/Laptop with your wireless password including changing your wireless password, please proceed to step 4.

Contents

1. Physical Connection
2. Network Configuration
3. Configuring Internet
4. Configuring WI-FI
5. Change of Password

1. PHYSICAL CONNECTION

Please refer to the Quick Reference Guide or Welcome Pack that came with your router.

PLEASE NOTE: Have your router powered on and connected directly to your PC via Ethernet Cable before you begin, as these instructions are based on wired Ethernet connection

2. NETWORK CONFIGURATION

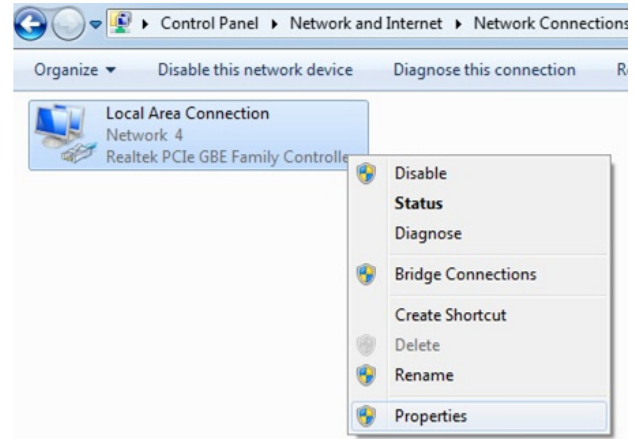
PPPoE connection does not require you to have an IP address or DNS settings manually encoded on your network card.

PPPoE connection uses authentication to establish the Internet connection and its after doing this that your router is assigned an IP and DNS settings from TPG.

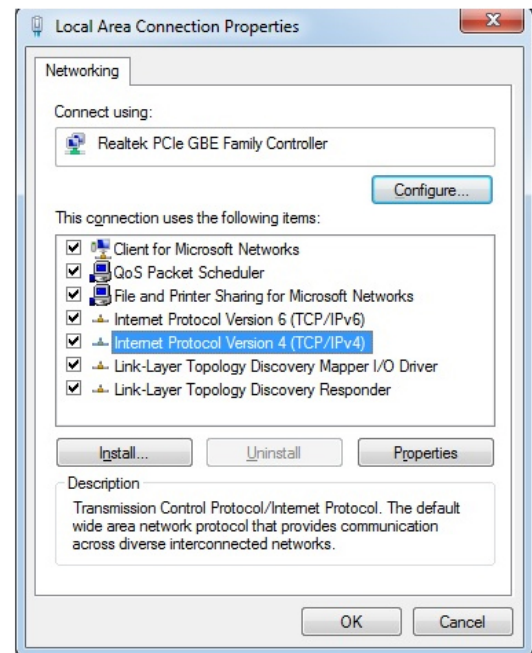
To begin, your PC needs to receive a private IP address from the router. Most NBN routers have DHCP enabled by default that will take care of this.

To ensure your Network Card is ready for this, please follow the following steps:

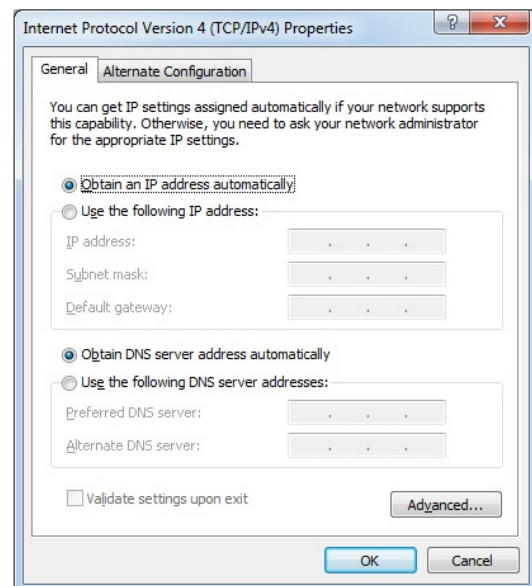
- A. Click on **Start -> Control Panel -> Network and Internet -> Network and Sharing Center -> Change adapter settings**
- B. Right click on Local Area Connection and select **Properties**



- C. Double Click on **Internet Protocol Version 4 (TCP/IPv4) -> Properties**



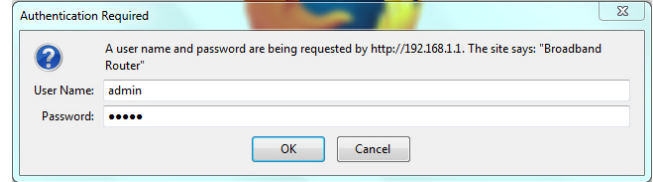
- D. Ensure **“Obtain an IP address automatically”** is selected
- E. Ensure **“Obtain DNS server address automatically”** is selected
- F. Click **OK**



3. CONFIGURING ROUTER

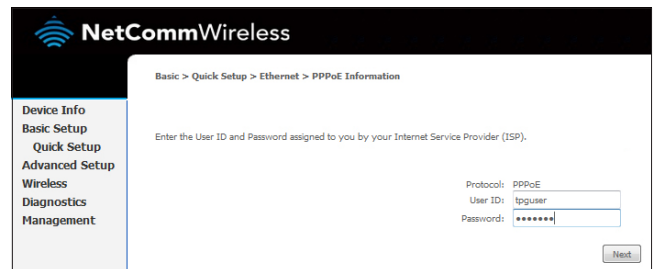
A. Open your browser and in the address bar type **http://192.168.1.1** and press **Enter**

B. Enter **admin** for both the username and password and click **OK**. If you have changed the login credentials, please enter the current username and password for your router interface.



C. Click **Quick Setup** under Basic Setup in the left hand panel

D. Type in your own TPG **username** and **password**, and click **Next**.



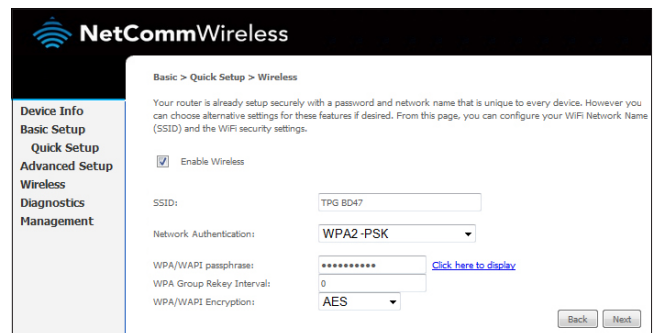
E. You can change your Wi-Fi settings in this step. By default, the router is configured with the following Wi-Fi security settings:

SSID (name for the Wi-Fi connection): TPG-xxxx (xxxx is a random 4 digit alpha numeric code)

Authentication Type: WPA-PSK/WPA2-PSK

Encryption: TKIP/AES

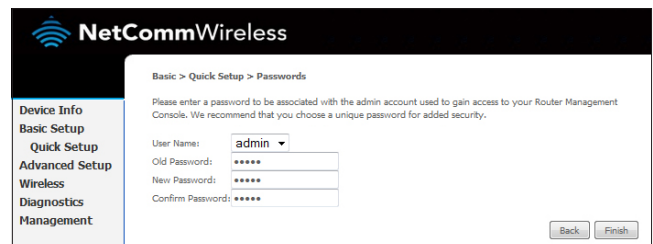
WPA/WAPI passphrase: Initially configured to be the same as your TPG password. You can enter your own text as an option.



Click **Next** to continue.

F. The final step is to change the password to log into your router configuration page. It is recommended that you choose a unique password.

Click **Finish** to complete the Quick Setup Wizard.

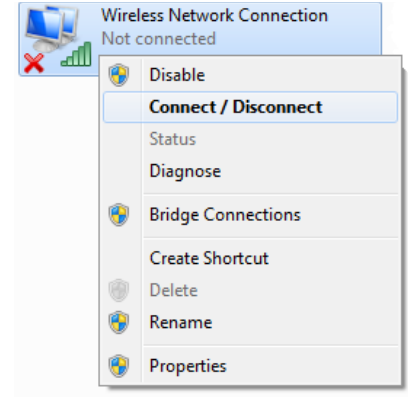


4. CONFIGURING WI-FI

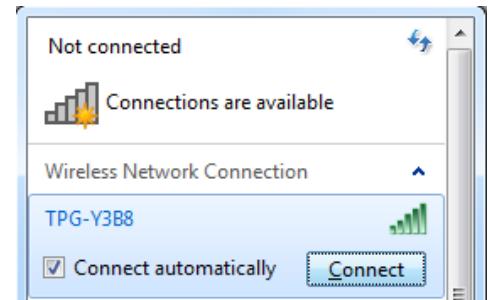
To use Wi-Fi, ensure that you have already setup your wireless adapter on your PC/laptop.

A. Click **Start > Control Panel > Network and Internet > Network and Sharing Center > Change adapter settings**

B. Right click on **Wireless Network Connection** and click **'Connect/Disconnect'**

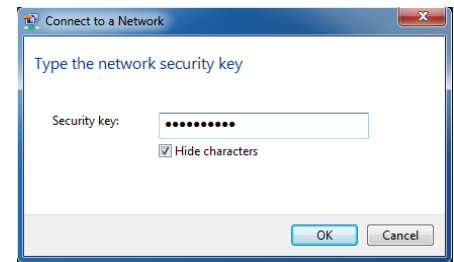


C. Find the SSID (network name) of your router and click **Connect**. By the default, the network name should be **TPG-xxxx** (xxxx is a random 4 digit alpha numeric code).

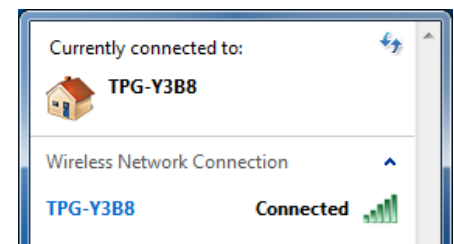


D. You will now be prompted to enter your **WPA Key / wireless** password. This is the same as your TPG password if you did not change it on the router.

E. Click **OK**.



F. You should now see your status as **'Connected'**.



5. CHANGE OF PASSWORD

For security purposes we highly recommend that you change your password if you are using your default or if you believe your password security has been compromised.

To change your password, first please visit www.tpg.com.au/password

Your new password will take approximately 10-15 minutes to take effect, after which you must reconfigure your new password in your router.

PLEASE NOTE:

Each time your router is powered on, it will initialize this automated authentication process after which your router will receive a public IP address (fixed or dynamic depending on your plan) and DNS settings from TPG.