

## Netcomm NB9W

Configuring in Layer2 PPPoE for Windows XP and 2000



### CONTENTS

1. Network Configuration
2. Re-configure In Layer2 PPPoE
3. Optional
4. Change of password

**PLEASE NOTE:** Please have your router powered on and connected directly to your PC via Ethernet cable before you begin as these instruction are based on Ethernet

### 1. NETWORK CONFIGURATION

PPPoE connection does not require you to have an IP address or DNS settings manually encoded on your network card. PPPoE connection uses authentication to establish the Internet connection and its after doing this that your router is assigned an IP and DNS settings from TPG.

To begin, your PC needs to receive a private IP address from the router. Most ADSL routers have DHCP enabled by default that will take care of this.

To ensure your Network Card is ready for this, please follow the following steps:

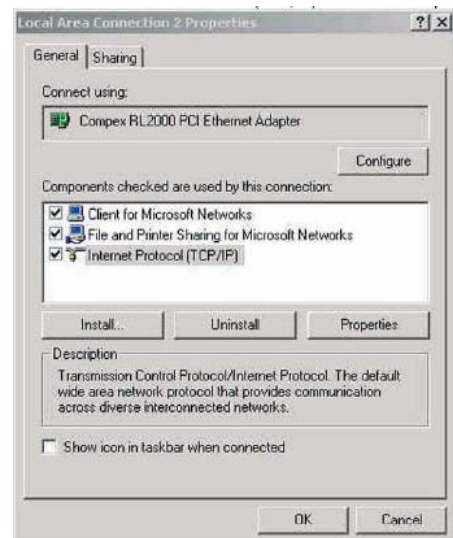
A. Click on **Start -> Settings -> Control Panel -> Network Connections**

B. Find your Network Card then right click on this and select **Properties**

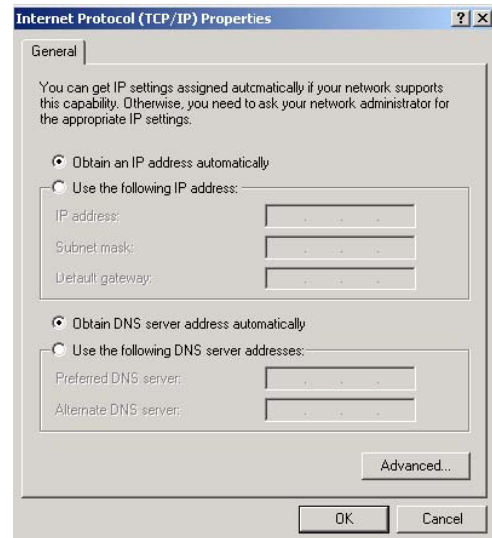
C. Double click on **Internet Protocol TCP/IP**



Local Area Connection



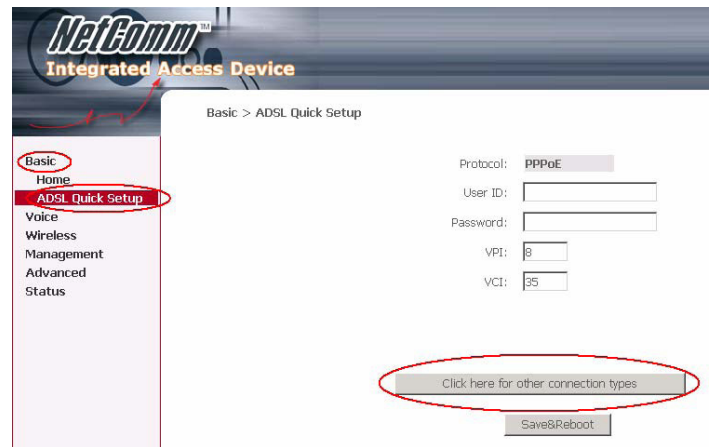
- D. Ensure “**Obtain an IP address automatically**” is selected
- E. Ensure “**Obtain DNS server address automatically**” is selected
- F. Click on **OK**



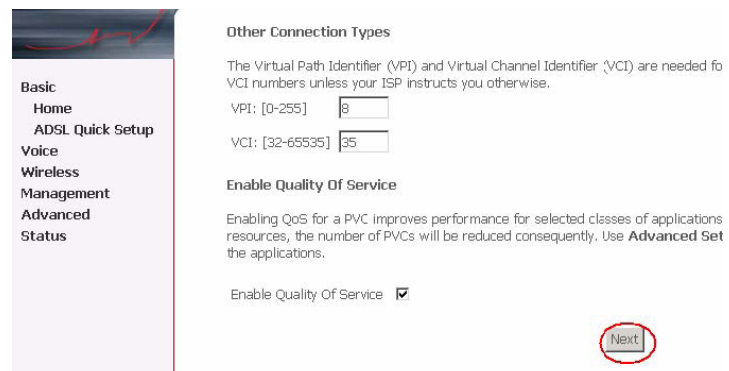
## 2. RE-CONFIGURE IN LAYER 2 PPPoE

Reconfiguration of the router to Layer 2 PPPoE can be done without disturbing VoIP or wireless settings (if applicable).

- A. Open your browser and in the address bar type `http://192.168.1.1` and press enter
- B. Enter **admin** for both the username and password and click on **OK**. If you have changed the login credential, please enter the current username and password for your router interface
- C. In the left menu, click on **Basic** then **ADSL Quick Setup**. Then click on **Click here for other connection types**



- D. In the Other Connections Type window, select:
  - VPI: 8
  - VCI: 35
  - Make sure **Enable QoS** is tickedClick **Next**



E. Select:

- **PPPoE over Ethernet** radial button
  - Encapsulation: LLLC/SNAP Bridging
- Click **Next**

Advanced > WAN > Connection Type

Select the type of network protocol and encapsulation mode over the ATM PA

PPP over ATM (PPPoA)

PPP over Ethernet (PPPoE)

Static IP Address (MER)

IP over ATM (IPoA)

Bridging

Encapsulation Mode  
LLC/SNAP-BRIDGING

Back Next

F. In the PPP Username and Password page, please select/ fill in the following fields:

- PPP Username:  
- <TPGusername>@L2TP.tpg.com.au for Fixed IP plans  
**OR** - <TPGusername>@PPP.tpg.com.au for Dynamic IP plans (e.g. adsl1234@L2TP.tpg.com.au)
  - PPP Password: Your Password by default is the same as your <TPGusername> however if you have changed your password since registration time, please use your current TPG password
  - NAT: Enabled
  - Untick Dial on Demand
- You can leave the rest as is
- Click **Next**

G. For the next page, simply click on **Next**

Enable IGMP Multicast, and WAN Service

Enable IGMP Multicast

Enable WAN Service

Service Name

Back Next

H. For the next page, click on **Next**

Device Setup

Configure the DSL Router IP Address and Subnet Mask for LAN interface.

IP Address:

Subnet Mask:

Disable DHCP Server

Enable DHCP Server

Start IP Address:

End IP Address:

Leased Time (hour):

Enable IGMP-SNOOPING

Configure the second IP Address and Subnet Mask for LAN interface

Back Next

I. Click **Next** again



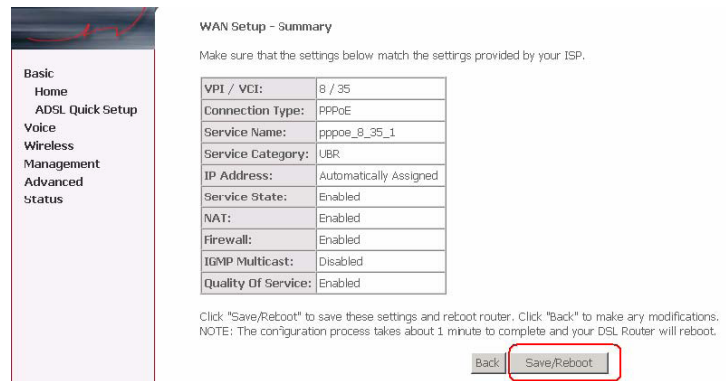
**Wireless -- Setup**

Enable Wireless

Enter the wireless network name (also known as SSID).  
SSID:

[Back](#) [Next](#)

J. Click on **Save and Reboot**



**WAN Setup - Summary**

Make sure that the settings below match the settings provided by your ISP.

VPI / VCI:	8 / 35
Connection Type:	PPPoE
Service Name:	pppoe_8_35_1
Service Category:	UBR
IP Address:	Automatically Assigned
Service State:	Enabled
NAT:	Enabled
Firewall:	Enabled
IGMP Multicast:	Disabled
Quality Of Service:	Enabled

Click "Save/Reboot" to save these settings and reboot router. Click "Back" to make any modifications.  
NOTE: The configuration process takes about 1 minute to complete and your DSL Router will reboot.

[Back](#) [Save/Reboot](#)

K. Reboot will take approx 2 mins after which your router should be ready to be used. To browse a website, please launch your browser



**DSL Router Reboot**

The DSL Router has been configured and is rebooting.

Close the DSL Router Configuration window and wait for 2 minutes before reopening your web browser, your PC's IP address to match your new configuration.

L. Your VoIP and wireless setup should remain unaffected

## 4. OPTIONAL

### Other Additional Services:

If you are reconfiguring your router from Layer 3 to Layer 2 PPPoE and you also had other services like web server, mail server, VPN etc that were dependent on your old Layer3 IP address, please ensure that appropriate reconfiguration is done to allow normal services to resume.

## 5. CHANGE OF PASSWORD

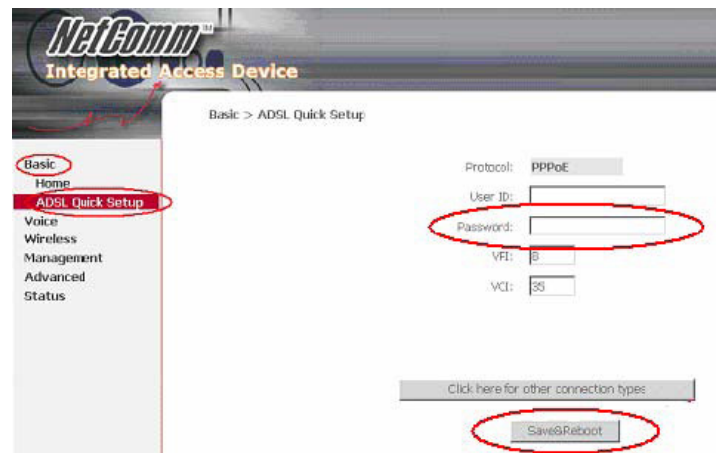
For security purposes we highly recommend that you change your password if you are using your default or if you believe your password security has been compromised.

To change your password, first please

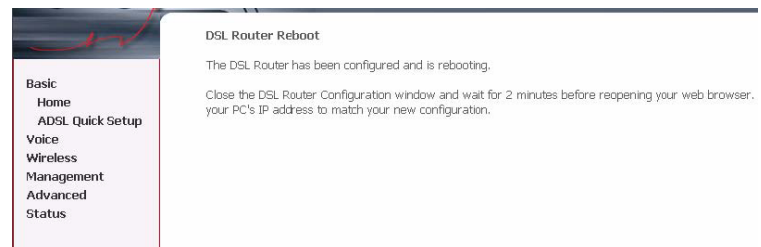
visit [https://cyberstore.tpg.com.au/your\\_account/?function=changepassword](https://cyberstore.tpg.com.au/your_account/?function=changepassword). Your new password will take approximately 10-15 minutes to take effect, after which you must reconfigure your new password in your router.

To change your password in your router, please follow the following steps:

- Open your browser and in the address bar type `http://192.168.1.1` and press enter
- Enter **admin** for both the username and password and click on **OK**. If you have changed the login credential, please enter the current username and password for your router interface
- In the left menu, click on **Basic** then **ADSL Quick Setup**.
- Enter your new password and click on **“Save and Reboot”**



- Reboot will take approx 2 mins after which your router should be ready to be used. To browse a website, please launch your browser



### PLEASE NOTE:

ADSL routers will by default be capable of automatic authentication. This means your router will use your credentials you have provided to make the Internet connection. Each time your router is powered on, it will initialize this automated authentication process after which your router will receive a public IP address (fixed or dynamic depending on your plan) and DNS settings from TPG.