

## TD-W9970 (ADSL2+ HOME BUNDLE)

Windows 7



### IMPORTANT MESSAGE

Your modem has already been pre-configured, you do not need to follow each step of the set-up guide but should retain this document in case you need to manually configure your equipment.

**To configure your PC/Laptop with your wireless password including changing your wireless password, please proceed to step 4.**

### Contents

1. Physical Connection
2. Network Configuration
3. Configuring Internet
4. Configuring Wireless
5. Change of Password

### 1. PHYSICAL CONNECTION

Have your modem powered on and connected directly to your PC via Ethernet Cable before you begin, as these instructions are based on wired Ethernet connection

For further information, please see wiring diagram and instructions for your ADSL2+ Home Bundle service below.

- [ADSL2+ Home Bundle Wiring Diagram](#)

### 2. NETWORK CONFIGURATION

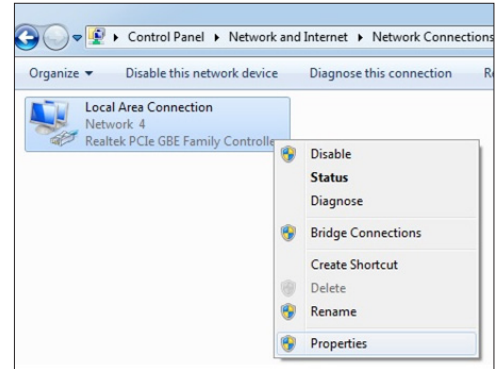
PPPoE connection does not require you to have an IP address or DNS settings manually encoded on your network card. PPPoE connection uses authentication to establish the Internet connection and once connected your modem will be assigned an IP and DNS settings from TPG.

To begin, your PC needs to receive a private IP address from the modem. Most modems have DHCP enabled by default that will take care of this.

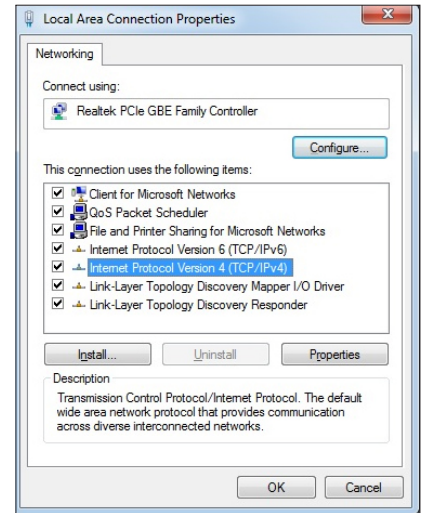
To ensure your Network Card is ready for this, please follow the following steps:

A. Click **Start -> Control Panel -> Network and Internet -> Network and Sharing Center -> Change adapter settings**

B. Right click on Local Area Connection and select **Properties**



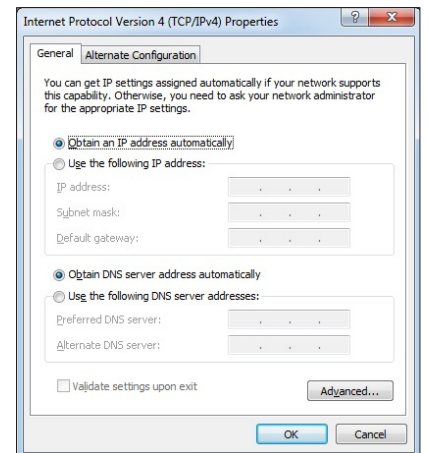
C. Click on **Internet Protocol Version 4 (TCP/IPv4)**, and then click **Properties**



D. Ensure **“Obtain an IP address automatically”** is selected

E. Ensure **“Obtain DNS server address automatically”** is selected

F. Click **OK**

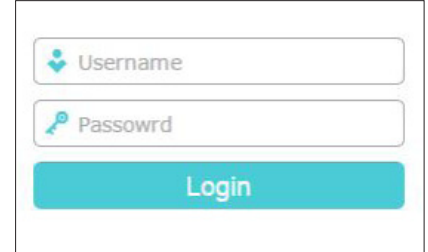


### 3. CONFIGURING MODEM

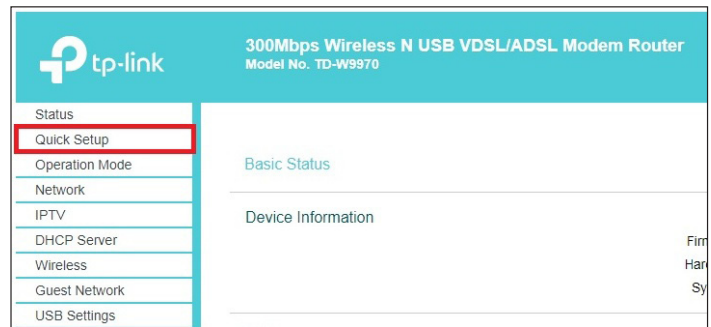
A. Open your browser and in the address bar type **http://192.168.1.1** and press **Enter**.



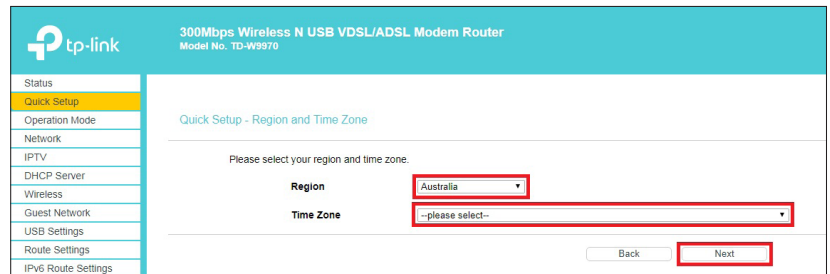
B. Enter **admin** for both the username and password and click **Login**. If you have changed the login credentials, please enter the current username and password for your modem interface.



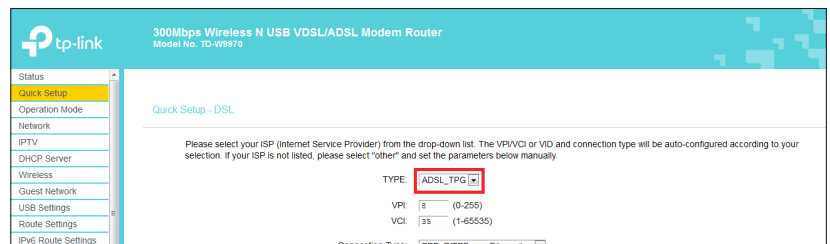
C. After your successful login, click **Quick Setup** in the menu. Click **Next** to start Quick Setup.



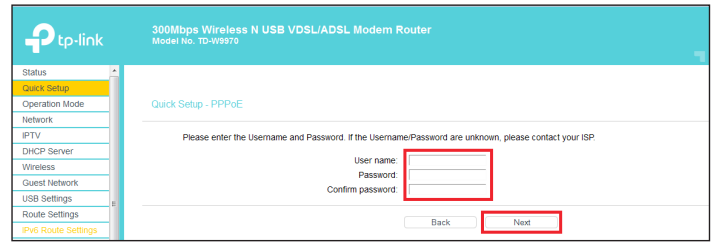
D. Select your **Region** and **Time Zone** from the drop-down list, then click **Next**.



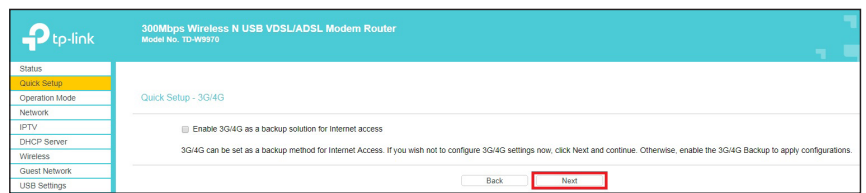
E. Select **ADSL\_TPG** as the connection type. The rest of the options will be populated automatically.



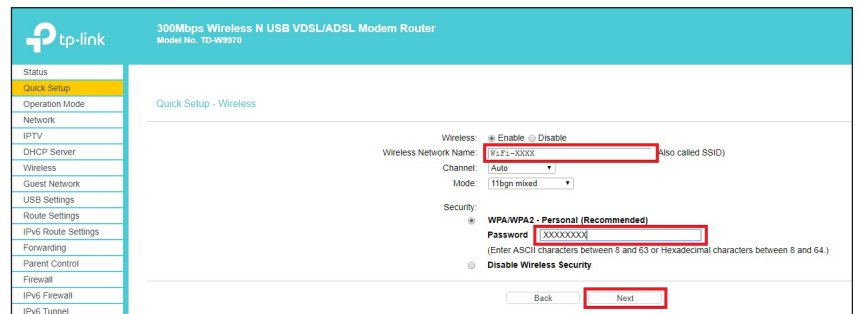
F. Enter your TPG **Username** and **Password**. Click **Next**



G. Click **Next** to continue.

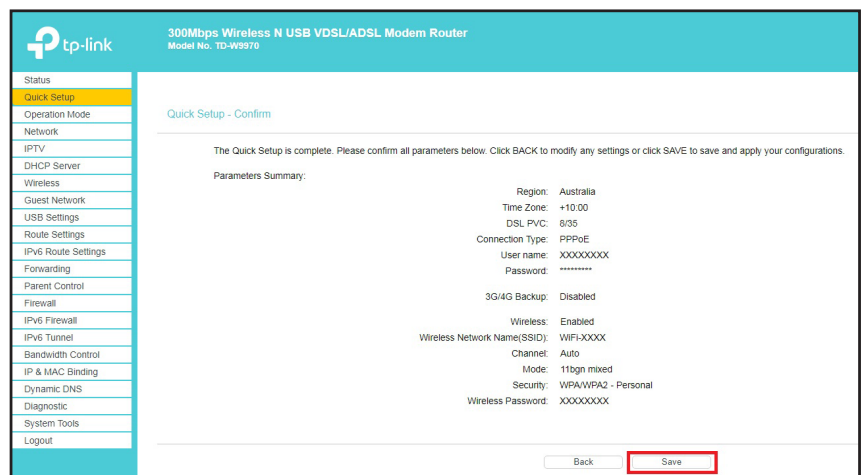


H. You can change your Wi-Fi details or keep the default settings. The default Wi-Fi SSID (**Wireless Network Name**) is WiFi-XXXX (XXXX is a random 4 digit alphanumeric code printed on the sticker underneath your modem). By default, the WiFi password is printed on a sticker underneath your modem (**Wireless Password/PIN**). Click **Next** to continue.



I. Confirm all parameters are correct. Click **Back** to modify or click **Save** to make your configuration effective.

You will see the Complete screen, click **Finish** to complete these settings.

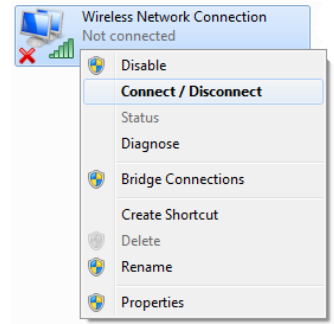


## 4. CONFIGURING WIRELESS

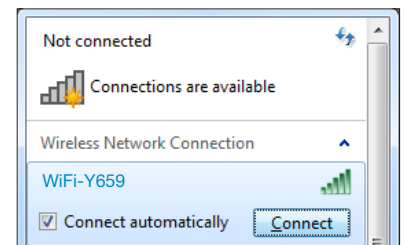
To use Wireless, ensure that you already have set up your wireless adapter.

A. Click **Start -> Control Panel -> Network and Internet -> Network and Sharing Center -> Change adapter settings**

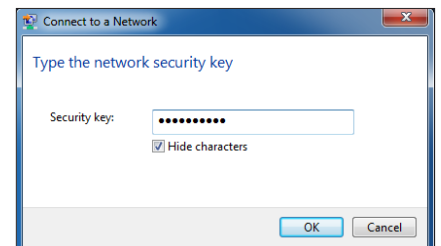
B. Right click on **Wireless Network Connection** and click '**Connect/Disconnect**'



C. Find the SSID (network name) of your modem and click **Connect**. By the default, the network name should be **WiFi-XXXX** (XXXX is a random 4 digit alpha numeric code).

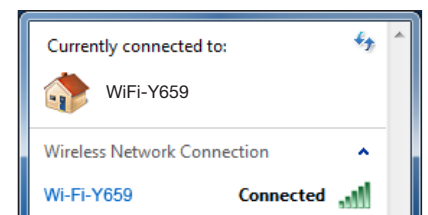


D. You will now be prompted to enter your **WPA Key/wireless** password. By default, the WiFi password is printed on a sticker underneath your modem (**Wireless Password/PIN**).



E. Click **OK**.

F. You should now see your status as '**Connected**'.



## 5. CHANGE OF PASSWORD

For security purposes we highly recommend that you change your password if you are using your default or if you believe your password security has been compromised. For password information, please visit [www.tpg.com.au/support](http://www.tpg.com.au/support).

### PLEASE NOTE:

Each time your modem is powered on, it will initialize this automated authentication process after which your modem will receive a public dynamic IP address (fixed or dynamic depending on your plan) and DNS settings from TPG.